

\$139,000 - 1 Bull Run Court, Beaufort

MLS #142155

\$139,000

Bedroom, Bathroom,
Land on 0 Acres

Gibbs Island, Beaufort, SC

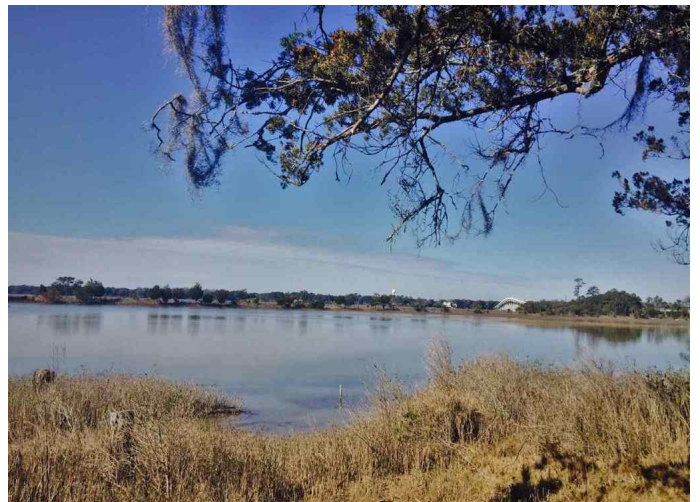
Waterfront homesite just under 1/2 acre in newer upscale community just 3 miles to historic downtown Beaufort and charming downtown Port Royal and even closer to Lady's Island shopping and business district. Western exposure sunset views over the Beaufort River/ ICW. Beautifully treed with hardwoods and palms. The Marshes at Lady's Island is a small, quiet community of Lowcountry homes surrounded by water views throughout. Convenient to hospitals, military bases, golfing, beaches, the Yacht & Sailing Club and the new Spanish Moss Trail. 3 public boat landings and 3 marinas within a five minute drive. Beaufort High, Lady's Island Middle and Lady's Island Elementary school districts. Minutes to St. Peter's Catholic, Beaufort Academy, Bridges & Riverview Charter, Beaufort & Lowcountry

Essential Information

MLS #	142155
Price	\$139,000
Acres	0.43
Type	Land
Sub-Type	Resident S/D Lot
Status	Active

Community Information

Address	1 Bull Run Court
Area	Ladys Island



Subdivision	Gibbs Island
City	Beaufort
County	Beaufort
State	SC
Zip Code	29907

Amenities

Utilities	Electric, Public Water, Sewer, Cable
View	Sunset views over the Beaufort River / ICW.
Is Waterfront	Yes
Waterfront	Marsh/Water/View

Exterior

Lot Description	Marsh/Water
-----------------	-------------

Additional Information

Zoning	PUD
--------	-----

Listing Details

Listing Agent	Christi Trumps
Listing Office	Tideland Realty Inc

Data last updated: September 18th, 2019 at 10:01pm EDT and updating occurs every 15 minutesThe information being provided by BEAUFORT® is for consumers' personal, non-commercial use and may not be used for any purpose other than to identify prospective properties consumers may be interested in purchasing.