

\$359,900 - 900 Elm Street W, Hampton

MLS #155503

\$359,900

Bedroom, Bathroom, 2,700 sqft
Commercial on 2.84 Acres

Hampton, Hampton, SC

2.84 Acres in Five points area of Hampton.
Borders on 3 Streets including US Highway.
Has multiple rental buildings on land.

Essential Information

MLS #	155503
Price	\$359,900
Square Footage	2,700
Acres	2.84
Type	Commercial
Sub-Type	Commercial
Status	Active

Community Information

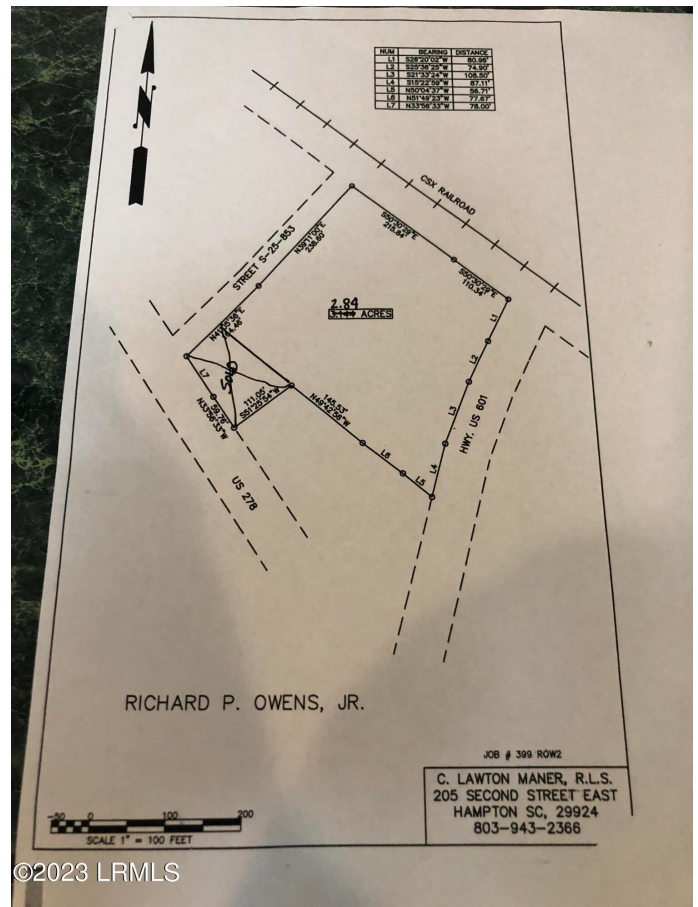
Address	900 Elm Street W
Area	Hampton County
Subdivision	Hampton
City	Hampton
County	Hampton
State	SC
Zip Code	29924

Amenities

Utilities	Public Water, Public Sewer
View	US Highway
Waterfront	No

Exterior

Lot Description	Corner Lot
-----------------	------------



Construction Other

Additional Information

Zoning Commercial

Listing Details

Listing Agent Lee Ellis

Listing Office Ellis Realty & Insurance Agenc

Data last updated: April 27th, 2024 at 4:46pm EDT and updating occurs every 15 minutesÂ© 2024 Low Country Regional Multiple Listing Service. Information is deemed reliable but not guaranteed. Information is provided exclusively for the consumer's personal, non-commercial use, and may not be used for any purpose other than to identify prospective properties consumers may be interested in purchasing.