

# \$1,250,000 - 205 Sea Island Pkwy, Beaufort

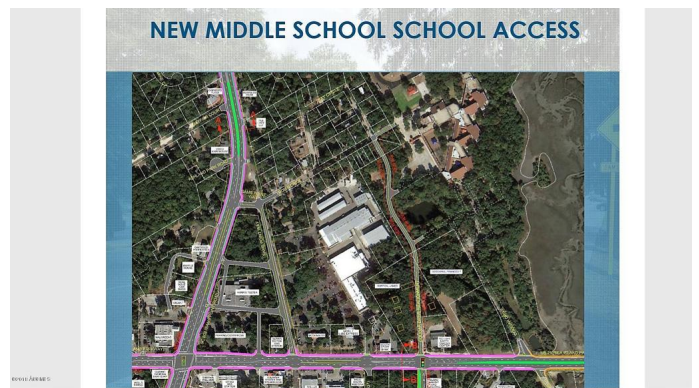
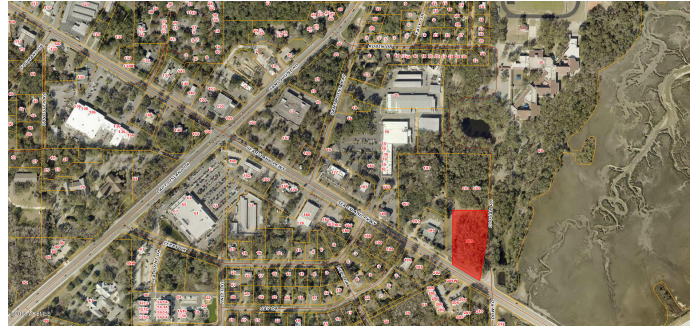
MLS #158717

## \$1,250,000

Bedroom, Bathroom,  
Commercial on 3 Acres

Woods Brdg-21, Beaufort, SC

2.5 acres zoned T4NC (see associated docs for permitted uses). Rare commercial development opportunity on Lady's Island - Highway 21/Sea Island Parkway. High visibility road frontage with over 20,000 daily traffic count. Adjacent parcel available (MLS #158715 - 3.5 acres). Ideal location for commercial, retail, hotel, medical offices, apartments, and more. Surrounded by large commercial/retail; Publix, Wal-Mart, Grayco, future Harris Teeter, Food Lion, restaurants, residential neighborhoods, and short drive to downtown Beaufort.



## Essential Information

MLS #	158717
Price	\$1,250,000
Acres	2.50
Type	Commercial
Sub-Type	Land Only
Status	Active



## Community Information

Address	205 Sea Island Pkwy
Area	Ladys Island
Subdivision	Woods Brdg-21
City	Beaufort
County	Beaufort
State	SC
Zip Code	29907

## Amenities

Utilities	Public Sewer, Public Water
Waterfront	No

## Exterior

Lot Description	Corner Lot
-----------------	------------

## Additional Information

Zoning	Residential/Commercial
--------	------------------------

## Listing Details

Listing Agent	Ethan James
Listing Office	Celadon Real Estate

Data last updated: July 19th, 2019 at 3:17pm EDT and updating occurs every 15 minutesThe information being provided by BEAUFORT® is for consumers' personal, non-commercial use and may not be used for any purpose other than to identify prospective properties consumers may be interested in purchasing.