

\$1,150,000 - 201 Sea Island Pkwy, Beaufort

MLS #173587

\$1,150,000

Bedroom, Bathroom,
Land on 3.50 Acres

Woods Brdg-21, Beaufort, SC

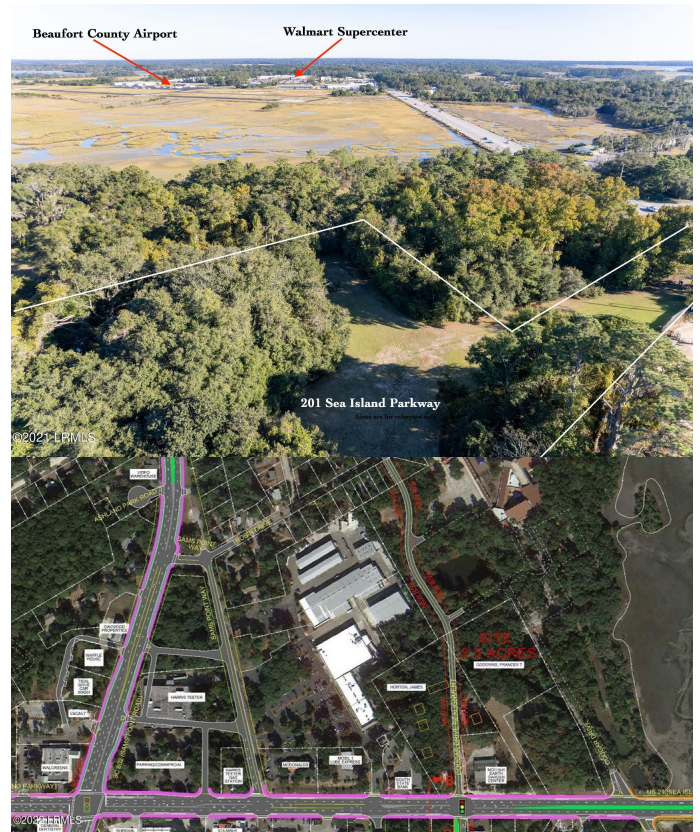
Prime commercial development opportunity on Highway 21/Sea Island Parkway. Site is located adjacent from the proposed new Starbucks location and the new Lady's Island Traffic Light currently in the pre-design phase with the county engineers. T4NC Zoning allows for nearly any business development. High visibility, great ingress/egress, over 25,000 daily traffic count, and minutes from downtown Beaufort. Surrounded by large commercial retail: Publix, Wal-Mart, Grayco, Harris Teeter, Food Lion, Wendy's, restaurants, and so much more. Ideal location for commercial/retail, hotel, medical offices, or apartments. See associated docs for pre-development and traffic light plan for Lady's Island.

Essential Information

MLS #	173587
Price	\$1,150,000
Acres	3.50
Type	Land
Sub-Type	Acreage/Farm Plantation
Status	Active

Community Information

Address	201 Sea Island Pkwy
Area	Ladys Island
Subdivision	Woods Brdg-21



City	Beaufort
County	Beaufort
State	SC
Zip Code	29907

Amenities

Utilities	Public Water, Sewer
Is Waterfront	Yes
Waterfront	None

Additional Information

Zoning	Residential/Commercial
--------	------------------------

Listing Details

Listing Agent	Ethan James
Listing Office	Charter One Realty

Data last updated: April 19th, 2024 at 11:46am EDT and updating occurs every 15 minutesÂ© 2024 Low Country Regional Multiple Listing Service. Information is deemed reliable but not guaranteed. Information is provided exclusively for the consumer's personal, non-commercial use, and may not be used for any purpose other than to identify prospective properties consumers may be interested in purchasing.