

\$3,500,000 - 106 Wrights Point Drive, Port Royal

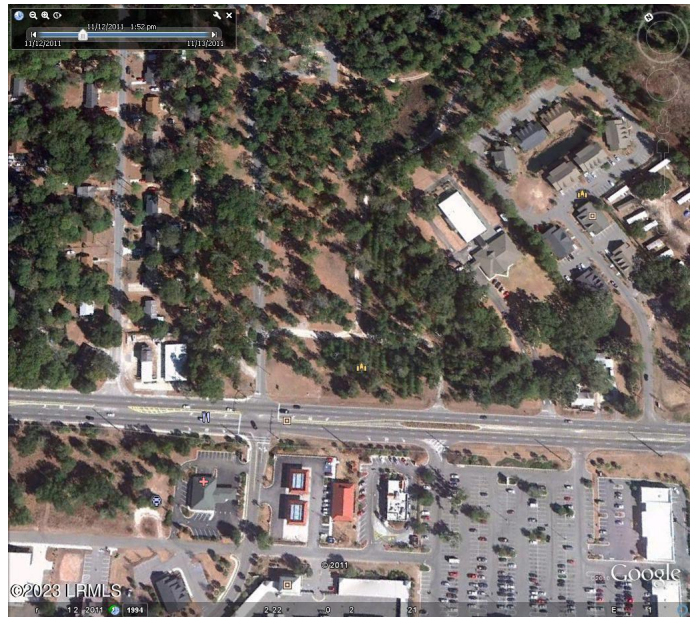
MLS #179445

\$3,500,000

Bedroom, Bathroom,
Commercial on 8.00 Acres

Wright's Point, Port Royal, SC

One of the very best commercial properties remaining in Beaufort County! Located at the major red-light intersection across the street from the Foodline Center, McDonalds and Lowcountry Medical. About 1 mile from Parris Island. Seller is also willing to ground lease and will subdivide lots to suit your needs. Final ground lease price will be dictated by the size and location of lot to be leased.



Essential Information

MLS #	179445
Price	\$3,500,000
Acres	8.00
Type	Commercial
Sub-Type	Commercial
Status	Active

Community Information

Address	106 Wrights Point Drive
Area	Pt Royal
Subdivision	Wright's Point
City	Port Royal
County	Beaufort
State	SC
Zip Code	29935

Amenities

Utilities	Cable, Electric, Public Water
-----------	-------------------------------

Waterfront No

Exterior

Lot Description Corner Lot

Additional Information

Zoning Commercial

Listing Details

Listing Agent Wayne Webb

Listing Office Lowcountry Real Estate

Data last updated: May 18th, 2024 at 10:46pm EDT and updating occurs every 15 minutesÂ© 2024 Low Country Regional Multiple Listing Service. Information is deemed reliable but not guaranteed. Information is provided exclusively for the consumer's personal, non-commercial use, and may not be used for any purpose other than to identify prospective properties consumers may be interested in purchasing.