

\$625,000 - 625 Elm Street E, Hampton

MLS #181016

\$625,000

Bedroom, Bathroom,
Commercial on 4.06 Acres

Hampton, Hampton, SC

Great Business Opportunity in Hampton!
Commercial Acreage for outparcel Plaza just
off US Hwy 278. Directions: From Hampton,
travel east on US Hwy 278 towards Varnville,
the parcel will be on your left, just past
Murdaugh Rentals and just across the road
from the Kubota equipment yard, before
KFC/Taco Bell.

Essential Information

MLS #	181016
Price	\$625,000
Acres	4.06
Type	Commercial
Sub-Type	Commercial
Status	Active

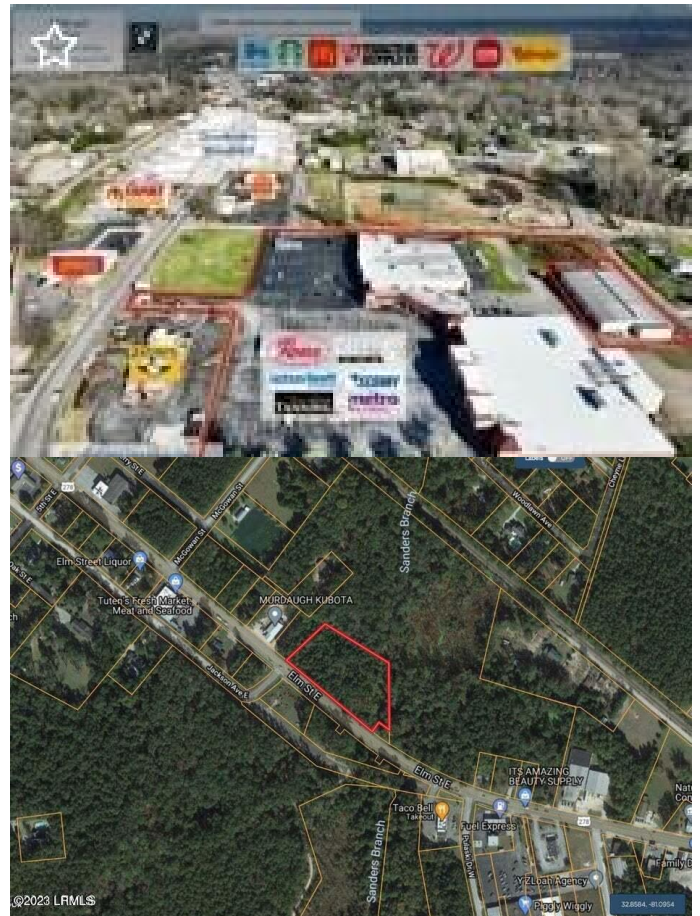
Community Information

Address	625 Elm Street E
Area	Hampton County
Subdivision	Hampton
City	Hampton
County	Hampton
State	SC
Zip Code	29924

Amenities

Waterfront	No
------------	----

Exterior



Lot Description Other

Additional Information

Zoning Other

Listing Details

Listing Agent Maria Love

Listing Office Realty One Group Lowcountry

Data last updated: May 9th, 2024 at 8:16am EDT and updating occurs every 15 minutesÂ© 2024 Low Country Regional Multiple Listing Service. Information is deemed reliable but not guaranteed. Information is provided exclusively for the consumer's personal, non-commercial use, and may not be used for any purpose other than to identify prospective properties consumers may be interested in purchasing.