

\$345,000 - 166 Westbury Park Way, Bluffton

MLS #183207

\$345,000

2 Bedroom, 3.00 Bathroom, 1,816 sqft

Residential on 0.09 Acres

Westbury Park, Bluffton, SC

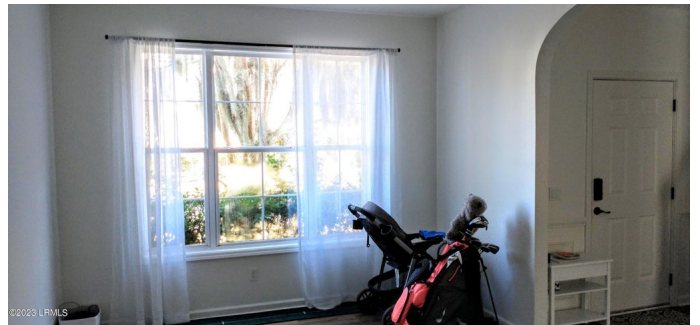
Make this beautiful townhome in exclusive Westbury Park your new home. Located at the end of a quiet cul de sac with mature landscaping, communities parks, pool and fitness center. The main living areas have wood floors with carpeting in the bedrooms. Each bedroom has it's own private bath with a guest 1/2 bath on the main level. The first floor has a large flex room which could be used for a variety of room options. Small fenced in low maintenance back yard with storage area and 2 car parking to the rear of the home.

Built in 2004

Essential Information

MLS #	183207
Price	\$345,000
Bedrooms	2
Bathrooms	3.00
Full Baths	2
Half Baths	1
Square Footage	1,816
Acres	0.09
Year Built	2004
Type	Residential
Sub-Type	Townhouse
Style	Two Story
Status	Active

Community Information



Address	166 Westbury Park Way
Area	Bluffton
Subdivision	Westbury Park
City	Bluffton
County	Beaufort
State	SC
Zip Code	29910

Amenities

Garages	None
Waterfront	None

Interior

Appliances	Cable TV/Available, Dishwasher, Disposal, Elec/Oven/Range, Microwave, Refrigerator
Heating	Heat Pump
Cooling	Heat Pump
Fireplace	Yes
Fireplaces	One

Exterior

Exterior Features	Patio
Roof	Composition A/S
Construction	Frame, Vinyl Siding
Foundation	Slab

Additional Information

Zoning	Residential
--------	-------------

Listing Details

Listing Agent	Gregory Bennett
Listing Office	Beaufort Realty Consultants

Data last updated: May 17th, 2024 at 12:31am EDT and updating occurs every 15 minutesÂ© 2024 Low Country Regional Multiple Listing Service. Information is deemed reliable but not guaranteed. Information is provided exclusively for the consumer's personal, non-commercial use, and may not be used for any purpose other than to identify prospective properties consumers may be interested in purchasing.