

# \$299,000 - 213 Castle Hill Drive, Yemassee

MLS #183816

**\$299,000**

Bedroom, Bathroom,  
Land on 0.40 Acres

Yemassee, Yemassee, SC

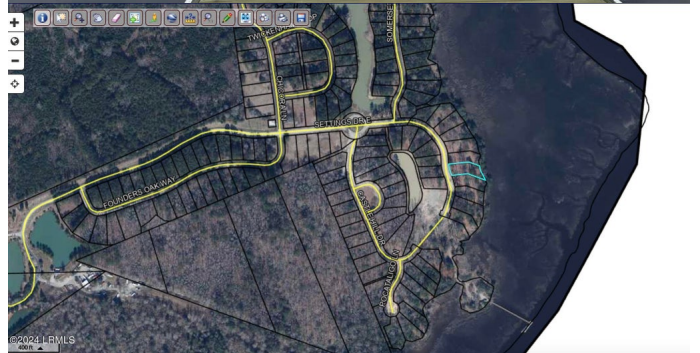
Beautiful Deepwater lot on the Pocotaligo River. A newly installed private shared dock, large pier head, lift poles and floating dock. This ready to build lot with live oaks and expansive views of the River. A short boat ride to the Broad River & access to Savannah, Charleston and Beaufort by water. Rivers Reach is a new up & coming, gated, waterfront community with Deepwater access. The community dock features a large pier head to accommodate a number of people and a long floating dock for a number of boat moorings. With water & sewer as well as permanent electric in both phases 1 & 2 this property is about to take off. Be the first to get into this neighborhood. With quick access to HWY 17 and under 2 miles from I-95. Charleston, Savannah & Hilton Head are within an hour drive.

## Essential Information

MLS #	183816
Price	\$299,000
Acres	0.40
Type	Land
Sub-Type	Resident S/D Lot
Status	Active

## Community Information

Address	213 Castle Hill Drive
Area	Northern Beaufort County



Subdivision	Yemassee
City	Yemassee
County	Jasper
State	SC
Zip Code	29945

**Amenities**

View	Pocotaligo River
Is Waterfront	Yes
Waterfront	Deep Water (Three Ft Min)

**Additional Information**

Zoning	Residential
--------	-------------

**Listing Details**

Listing Agent	Steven Comerford
Listing Office	The HomesFinder Realty Group

Data last updated: May 9th, 2024 at 3:45am EDT and updating occurs every 15 minutesÂ© 2024 Low Country Regional Multiple Listing Service. Information is deemed reliable but not guaranteed. Information is provided exclusively for the consumer's personal, non-commercial use, and may not be used for any purpose other than to identify prospective properties consumers may be interested in purchasing.