

\$2,300 - 166 Westbury Park Way, Bluffton

MLS #184817

\$2,300

2 Bedroom, 3.00 Bathroom, 1,860 sqft

Residential on 0.25 Acres

Westbury Park, Bluffton, SC

Available 1 May 2024. Fabulous 2 bedroom with additional room for a 3rd bedroom . 2 full baths , designated parking and small backyard. Community ammenities to include a pool. Located in the heart of Bluffton in the private gated community of Westbury Park .

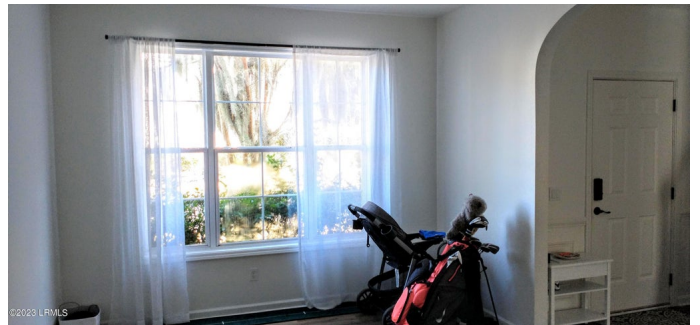
Built in 2004

Essential Information

MLS #	184817
Price	\$2,300
Bedrooms	2
Bathrooms	3.00
Full Baths	2
Half Baths	1
Square Footage	1,860
Acres	0.25
Year Built	2004
Type	Residential
Sub-Type	Townhouse
Style	Two Story
Status	Active

Community Information

Address	166 Westbury Park Way
Area	Bluffton
Subdivision	Westbury Park
City	Bluffton
County	Beaufort



State	SC
Zip Code	29910

Amenities

Garages	None
Waterfront	None

Interior

Appliances	Cable TV/Available, Dishwasher, Disposal, Elec/Oven/Range, Microwave, Refrigerator, Vent Fan
Heating	Heat Pump
Cooling	Heat Pump
Fireplace	Yes
Fireplaces	Family Room, One

Exterior

Exterior Features	Patio, Thermo-Panes
Roof	Composition A/S
Construction	Frame, Vinyl Siding
Foundation	Slab

Additional Information

Zoning	Residential
--------	-------------

Listing Details

Listing Agent	Gregory Bennett
Listing Office	Beaufort Realty Consultants

Data last updated: May 18th, 2024 at 3:16pm EDT and updating occurs every 15 minutesÂ© 2024 Low Country Regional Multiple Listing Service. Information is deemed reliable but not guaranteed. Information is provided exclusively for the consumer's personal, non-commercial use, and may not be used for any purpose other than to identify prospective properties consumers may be interested in purchasing.