

# \$6,000 - 1670 Ribaut Road, Port Royal

MLS #187663

**\$6,000**

Bedroom, Bathroom,  
Commercial/Industry on 1.02 Acres

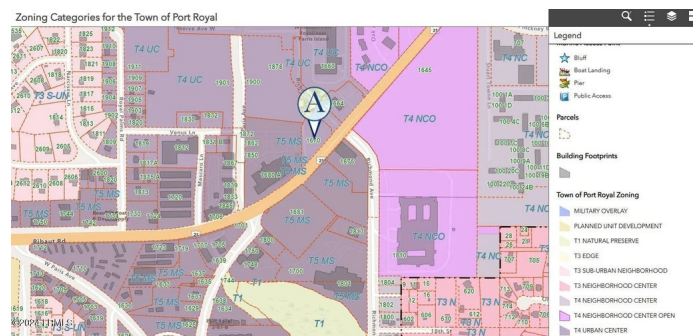
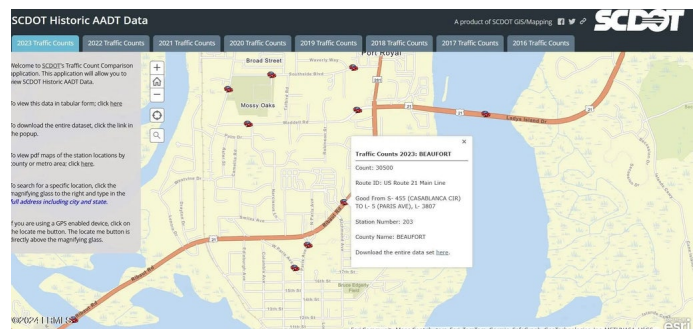
Frontage-Ribaut, Port Royal, SC

Seize this exceptional opportunity to establish your business on one of Port Royal's most desirable commercial sites. Located at the high-visibility corner of Ribaut Road and Richmond Avenue, this one-acre site boasts an impressive traffic count of over 30,000 vehicles daily.

The property is pad-ready and nearly fully cleared, with water, sewer, and power already on site. Stormwater management is conveniently supported by an adjacent retention pond, ensuring infrastructure is ready for your project.

With T4-UC zoning, this site is ideal for retail, professional, and food & beverage businesses looking for a high-traffic location. The owner offers flexibility to build to your exact specifications, pending town approval.

As several major developments are underway in the immediate area, this is a rare chance to secure a premier location for your business. Don't miss out on this opportunity lock this site down.



## Essential Information

MLS #	187663
Price	\$6,000
Acres	1.02

Type	Commercial/Industry
Sub-Type	Commercial
Status	Active

**Community Information**

Address	1670 Ribaut Road
Area	Pt Royal
Subdivision	Frontage-Ribaut
City	Port Royal
County	Beaufort
State	SC
Zip Code	29935

**Amenities**

Waterfront	No
------------	----

**Additional Information**

Zoning	Commercial
--------	------------

**Listing Details**

Listing Agent	William Achurch
Listing Office	The HomesFinder Realty Group

Data last updated: October 15th, 2025 at 11:47am EDT and updating occurs every 15 minutesÂ© 2024 Low Country Regional Multiple Listing Service. Information is deemed reliable but not guaranteed. Information is provided exclusively for the consumer's personal, non-commercial use, and may not be used for any purpose other than to identify prospective properties consumers may be interested in purchasing.