

# \$1,148,500 - 208 Cotton Dike Road, St. Helena Island

MLS #190889

**\$1,148,500**

3 Bedroom, 3.00 Bathroom, 3,234 sqft

Residential on 0.39 Acres

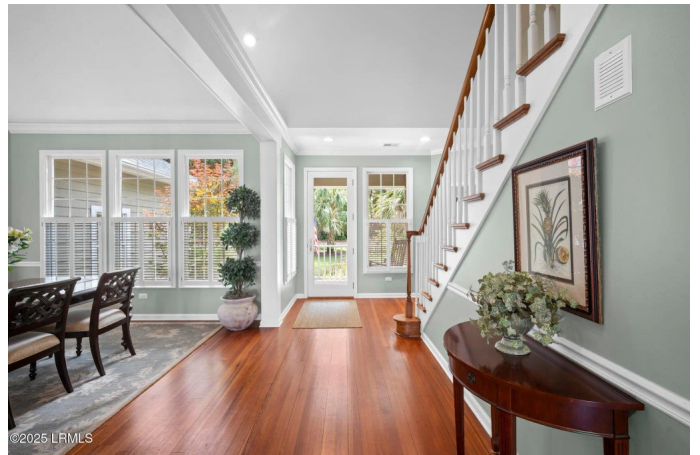
Dataw Island, St. Helena Island, SC

Cocktail views for miles! Wake up in the oversized primary suite with floor to ceiling windows looking out at the highly sought after west marsh. Then conclude the day in the large screened in porch watching the birds and breathtaking sunsets. An updated bathroom and large walk-in closet with custom built-ins complete the owner's suite. Two fireplaces provide Lowcountry charm to the family room off the updated kitchen and the separate open formal living/dining rooms. Wide plank pine floors and an office/den complete the main floor. Upstairs are 2 guest bedrooms, a full bathroom, ample storage and a Carolina Room with the same west marsh views that will have your guests longing to visit Dataw again.

Built in 1993

## Essential Information

|                |             |
|----------------|-------------|
| MLS #          | 190889      |
| Price          | \$1,148,500 |
| Bedrooms       | 3           |
| Bathrooms      | 3.00        |
| Full Baths     | 2           |
| Half Baths     | 1           |
| Square Footage | 3,234       |
| Acres          | 0.39        |
| Year Built     | 1993        |
| Type           | Residential |



|          |                         |
|----------|-------------------------|
| Sub-Type | Single Family Residence |
| Status   | Active                  |

### Community Information

|             |                      |
|-------------|----------------------|
| Address     | 208 Cotton Dike Road |
| Area        | Dataw Island         |
| Subdivision | Dataw Island         |
| City        | St. Helena Island    |
| County      | Beaufort             |
| State       | SC                   |
| Zip Code    | 29920                |

### Amenities

|               |                  |
|---------------|------------------|
| Garages       | 2 Bay Attached   |
| View          | West Marsh       |
| Is Waterfront | Yes              |
| Waterfront    | Marsh/Water/View |

### Interior

|                 |   |
|-----------------|---|
| Appliances      | Auto/Gar/Opener, Dishwasher, Disposal, Dryer, Fire Alarm, Fireplace/Equipment, Gas/Oven/Range, Ice Maker, Microwave, Refrigerator, Washer |
| Heating         | Central, Heat Pump  |
| Cooling         | Central Air, Heat Pump  |
| Fireplace       | Yes   |
| # of Fireplaces | 2   |
| Fireplaces      | Gas, Family Room, Great Room  |

### Exterior

|                   |                       |
|-------------------|-----------------------|
| Exterior          | Cedar                 |
| Exterior Features | Storage, Thermo-Panes |
| Roof              | Composition           |
| Construction      | Cedar                 |
| Foundation        | Crawl                 |

### Additional Information

|        |     |
|--------|-----|
| Zoning | PUD |
|--------|-----|

### Listing Details

|               |                |
|---------------|----------------|
| Listing Agent | Scott Anderson |
|---------------|----------------|

Data last updated: October 14th, 2025 at 6:47am EDT and updating occurs every 15 minutesÂ© 2024 Low Country Regional Multiple Listing Service. Information is deemed reliable but not guaranteed. Information is provided exclusively for the consumer's personal, non-commercial use, and may not be used for any purpose other than to identify prospective properties consumers may be interested in purchasing.