

\$425,000 - 2 Keowee Lane, Beaufort

MLS #192163

\$425,000

3 Bedroom, 3.00 Bathroom, 2,390 sqft

Residential on 0.20 Acres

Shadow Moss, Beaufort, SC

Step into this move-in ready home with an open-concept layout that's as functional as it is inviting. The Hartwell model includes a primary suite on the main floor and loft upstairs â€” perfect for extra living space, a media/game room, or flexible usage. Owner's suite with a spa-style bathroom: separate walk-in shower, soaking tub, and walk-in closet. Main floor includes a half bath for guests, laundry/utility access, and smooth flow between living, dining, and kitchen areas

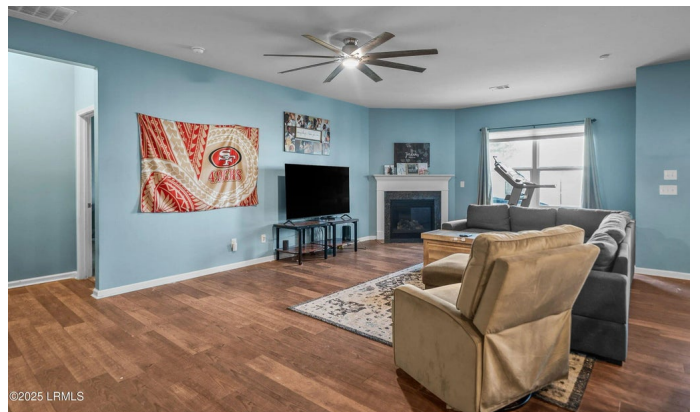
Built in 2017

Essential Information

MLS #	192163
Price	\$425,000
Bedrooms	3
Bathrooms	3.00
Full Baths	2
Half Baths	1
Square Footage	2,390
Acres	0.20
Year Built	2017
Type	Residential
Sub-Type	Single Family Residence
Status	Active

Community Information

Address	2 Keowee Lane
Area	Burton



Subdivision	Shadow Moss
City	Beaufort
County	Beaufort
State	SC
Zip Code	29906

Amenities

View	Landscaped Corner Lot
Waterfront	None

Interior

Appliances	Auto/Gar/Opener, Cable TV/Available, Dishwasher, Disposal, Microwave, Refrigerator, Unfurnished
Heating	Central, Heat Pump
Cooling	Electric, Central Air
Fireplace	Yes
# of Fireplaces	1
Fireplaces	Gas, Family Room

Exterior

Exterior	Frame, Vinyl Siding
Roof	Composition
Construction	Frame, Vinyl Siding
Foundation	Slab

Additional Information

Zoning	Residential
--------	-------------

Listing Details

Listing Agent	Stephanie R Cox
Listing Office	The Cox Team Brokered by eXp

Data last updated: October 14th, 2025 at 9:47am EDT and updating occurs every 15 minutesÂ© 2024 Low Country Regional Multiple Listing Service. Information is deemed reliable but not guaranteed. Information is provided exclusively for the consumer's personal, non-commercial use, and may not be used for any purpose other than to identify prospective properties consumers may be interested in purchasing.