

\$1,750,000 - 2301 Us 80 Highway, Bloomingdale

MLS #294442

\$1,750,000

4 Bedroom, 3.00 Bathroom, 2,455 sqft
Residential on 5.00 Acres

N/A, Bloomingdale, GA

Only minutes from the Hyundai Meta site this property offers the perfect opportunity for Commercial, Industrial or Multi-Family Development. This 5 acre parcel must be sold together with the adjoining 5 acre parcel. The total asking price for the 10 acres is \$3,500,000. The front parcel is zoned B-3 & rear parcel is zoned AR-1. The property to the immediate east of this property was recently rezoned to Industrial. This site offers over 600' of excellent U.S. Highway 80 Frontage!

Built in 1984

Essential Information

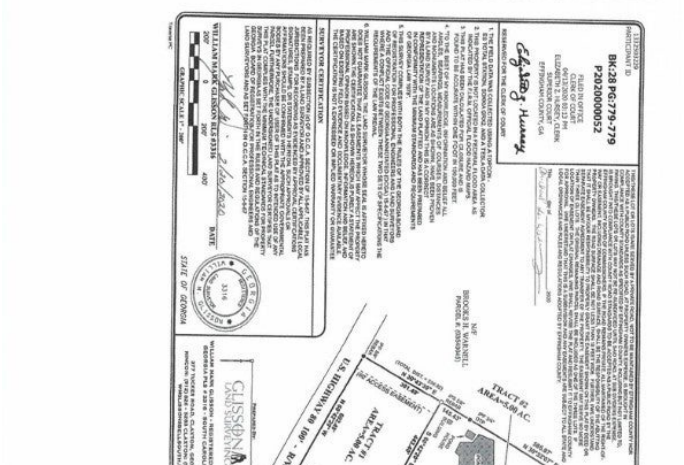
MLS #	294442
Price	\$1,750,000
Bedrooms	4
Bathrooms	3.00
Full Baths	2
Half Baths	1
Square Footage	2,455
Square Footage	217800
Acres	5.00
Year Built	1984
Type	Residential
Sub-Type	Single Family Residence
Status	Active

Community Information



GSCCA.org - Image Index

<https://search.gscoca.org/Imaging/HTML5Viewer.aspx?id=2625706...>



Address	2301 Us 80 Highway
Subdivision	N/A
City	Bloomingtondale
County	Effingham County
State	GA
Zip Code	31302

Amenities

Utilities	Cable Available
Features	Interior Lot
Parking	Off Street
Garages	Off Street
View	Trees/Woods
Is Waterfront	Yes
Waterfront	Pond
Has Pool	Yes
Pool	In Ground

Interior

Interior Features	Breakfast Area, Ceiling Fan(s), Central Vacuum, Fireplace, Main Level Primary, Pantry, Pull Down Attic Stairs
Appliances	Electric Water Heater, Dishwasher, Disposal, Oven, Range, Range Hood, Refrigerator, Trash Compactor
Heating	Central, Electric
Cooling	Central Air, Electric
Fireplace	Yes
# of Fireplaces	1
Fireplaces	Factory Built, Gas, Gas Log, Great Room
# of Stories	1

Exterior

Exterior	Vinyl Siding
Exterior Features	Deck, Patio
Lot Description	Interior Lot
Roof	Composition
Construction	Vinyl Siding
Foundation	Raised

School Information

Elementary	Marlow
Middle	South Effingham
High	South Effingham

Additional Information

Date Listed	August 11th, 2023
Zoning	AR-1

Listing Details

Listing Agent	Holly S. Young
Listing Office	Re/Max Savannah

The data relating to real estate for sale on this web site comes in part from the Internet Data Exchange program of the Savannah Multi-List Corporation. Real estate listings held by brokerage firms other than [INSERT BROKER NAME] are marked with the name of the listing brokers. Information deemed reliable but not guaranteed. © 2024 Savannah Multi-List Corporation. All rights reserved. This data up-to-date as of June 1st, 2024 at 09:35am, EDT. For the most current information, contact [your firm name, phone number, and e-mail address]