

\$288,425 - 9475 Tibet Highway Se, Allenhurst

MLS #307676

\$288,425

4 Bedroom, 3.00 Bathroom, 2,002 sqft
Residential on 0.58 Acres

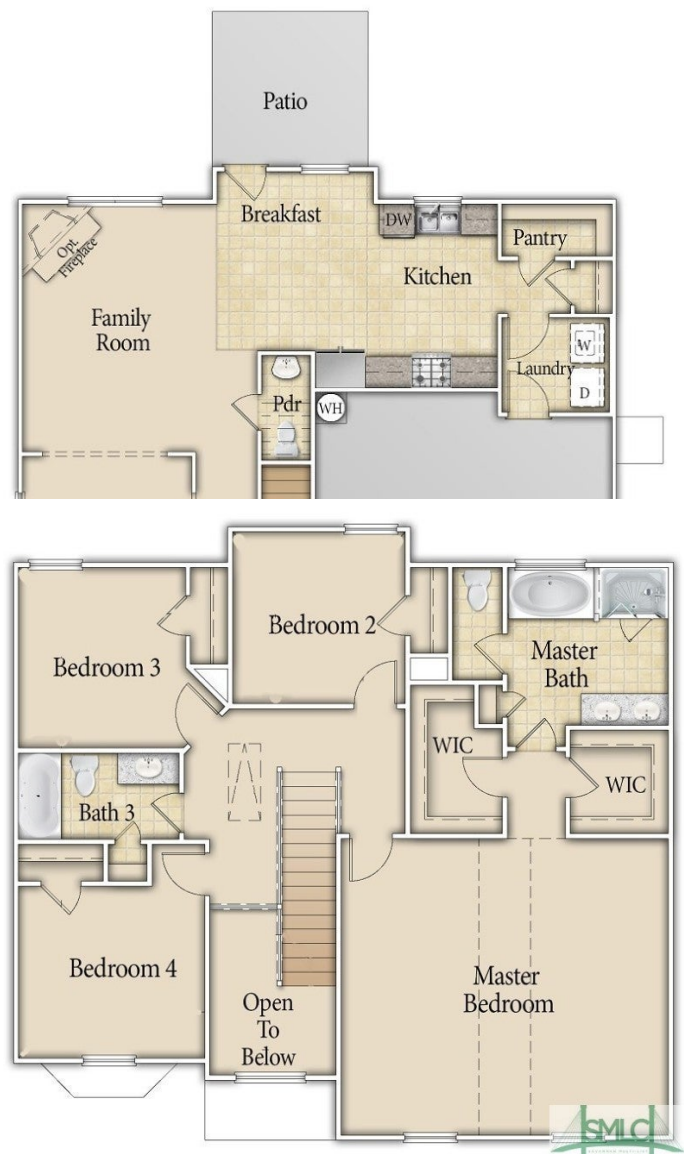
Tibet Road at Sassafra, Allenhurst, GA

The Chatman is one of our best selling and most practical homes! It includes features such as an oversized pantry plus a nearby supply closet to keep the mop and broom. The galley kitchen opens to the breakfast and great room boasting an electric fireplace. The adjoining dining room is perfect for hosting dinner parties, and the stately bay window lends a timeless charm to an already attractive room. Upstairs, three secondary bedrooms share a full bath and linen closet. The huge primary suite boasts a vaulted ceiling, sitting nook, his & hers closets, a double vanity and garden tub. Grill or play with the fur-babies in your large backyard after a long day. Artistic renderings are for informational purposes only. Actual floor plans, features and inclusions may vary.

Built in 2024

Essential Information

MLS #	307676
Price	\$288,425
Bedrooms	4
Bathrooms	3.00
Full Baths	2
Half Baths	1
Square Footage	2,002
Square Footage	25265
Acres	0.58



Year Built	2024
Type	Residential
Sub-Type	Single Family Residence
Style	Traditional
Status	Active

Community Information

Address	9475 Tibet Highway Se
Subdivision	Tibet Road at Sassafras
City	Allenhurst
County	Long
State	GA
Zip Code	31301

Amenities

Utilities	Underground Utilities
Features	Sprinkler System
Parking	Attached
# of Garages	2
Garages	Attached

Interior

Interior Features	Breakfast Area, Double Vanity, Entrance Foyer, Garden Tub/Roman Tub, High Ceilings, Primary Suite, Pantry, Pull Down Attic Stairs, Separate Shower, Programmable Thermostat, Galley Kitchen
Appliances	Dishwasher, Electric Water Heater, Microwave, Oven, Range, Refrigerator
Heating	Central, Electric
Cooling	Central Air, Electric
Fireplace	Yes
# of Fireplaces	1
Fireplaces	Electric, Family Room
# of Stories	2

Exterior

Exterior	Brick
Exterior Features	Patio
Lot Description	Sprinkler System
Roof	Asphalt, Ridge Vents

Construction	Brick
Foundation	Slab

School Information

Elementary	Long County
Middle	Long County
High	Long County

Additional Information

Date Listed	March 15th, 2024
HOA Fees	34
HOA Fees Freq.	Monthly

Listing Details

Listing Agent	Miranda Sikes
Listing Office	RTS Realty LLC

The data relating to real estate for sale on this web site comes in part from the Internet Data Exchange program of the Savannah Multi-List Corporation. Real estate listings held by brokerage firms other than [INSERT BROKER NAME] are marked with the name of the listing brokers. Information deemed reliable but not guaranteed. © 2024 Savannah Multi-List Corporation. All rights reserved. This data up-to-date as of May 20th, 2024 at 02:28am, EDT. For the most current information, contact [your firm name, phone number, and e-mail address]