

# \$345,625 - 9785 Tibet Highway, Allenhurst

MLS #310167

## \$345,625

5 Bedroom, 3.00 Bathroom, 2,813 sqft  
Residential on 0.55 Acres

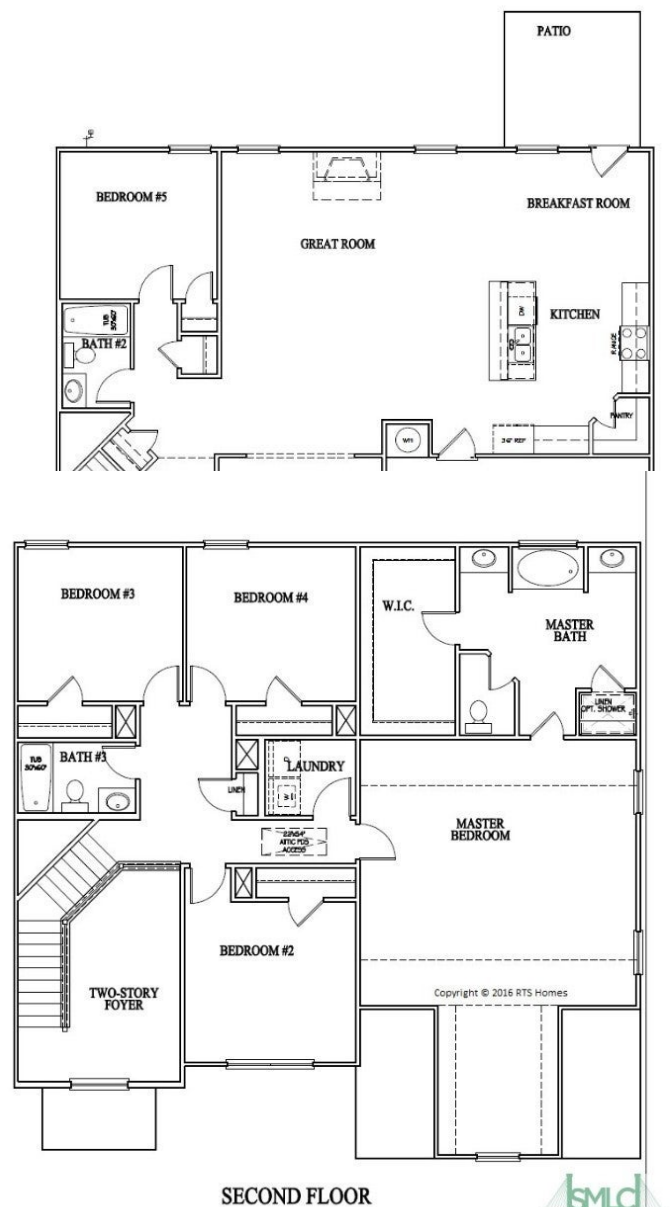
Tibet Road at Sassafras, Allenhurst, GA

Welcome to the Screven Covenant located in Tibet Road at Sassafras community on a generous homesite featuring a beautiful BRICK skirt. This large open floor plan has 5 bedrooms and 3 baths. With enough space to go around, this house is great for entertaining friends and family. The two-story home features an open kitchen with a spacious island and breakfast room, a dining room, cozy gas fireplace in the family room, as well as a full guest bedroom and bath on the main level. Upstairs you'll find your primary suite with bathroom and walk-in closet. There are also 3 more bedrooms that share a hall bathroom on the second floor. Artistic renderings are for informational purposes only. Actual floor plans, features and inclusions may vary.

Built in 2024

## Essential Information

MLS #	310167
Price	\$345,625
Bedrooms	5
Bathrooms	3.00
Full Baths	3
Square Footage	2,813
Square Footage	23958
Acres	0.55
Year Built	2024
Type	Residential



Sub-Type	Single Family Residence
Style	Traditional
Status	Active

### Community Information

Address	9785 Tibet Highway
Subdivision	Tibet Road at Sassafras
City	Allenhurst
County	Long
State	GA
Zip Code	31301

### Amenities

Utilities	Underground Utilities
Features	Sprinkler System
Parking	Attached
# of Garages	2
Garages	Attached

### Interior

Interior Features	Breakfast Area, Double Vanity, Entrance Foyer, Garden Tub/Roman Tub, High Ceilings, Kitchen Island, Primary Suite, Pantry, Pull Down Attic Stairs, Separate Shower, Programmable Thermostat
Appliances	Dishwasher, Electric Water Heater, Microwave, Oven, Range, Refrigerator
Heating	Central, Electric
Cooling	Central Air, Electric
Fireplace	Yes
# of Fireplaces	1
Fireplaces	Family Room, Gas
# of Stories	2

### Exterior

Exterior	Brick
Exterior Features	Covered Patio
Lot Description	Sprinkler System
Roof	Asphalt, Ridge Vents
Construction	Brick
Foundation	Slab

**School Information**

Elementary	Long County
Middle	Long County
High	Long County

**Additional Information**

Date Listed	April 12th, 2024
HOA Fees	34
HOA Fees Freq.	Monthly

**Listing Details**

Listing Agent	Miranda Sikes
Listing Office	RTS Realty LLC

The data relating to real estate for sale on this web site comes in part from the Internet Data Exchange program of the Savannah Multi-List Corporation. Real estate listings held by brokerage firms other than [INSERT BROKER NAME] are marked with the name of the listing brokers. Information deemed reliable but not guaranteed. © 2024 Savannah Multi-List Corporation. All rights reserved. This data up-to-date as of May 20th, 2024 at 04:14am, EDT. For the most current information, contact [your firm name, phone number, and e-mail address]