

# \$307,475 - 9829 Tibet Highway Se, Allenhurst

MLS #310584

## \$307,475

4 Bedroom, 3.00 Bathroom, 2,254 sqft  
Residential on 0.55 Acres

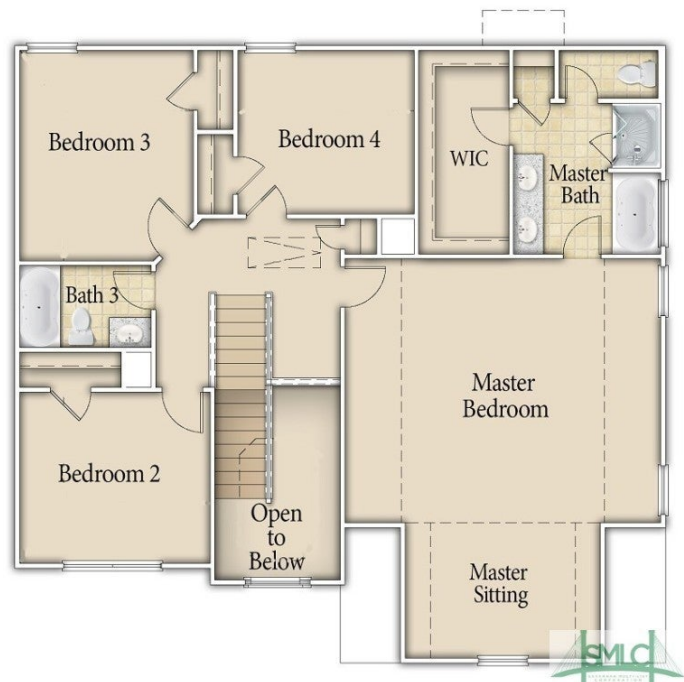
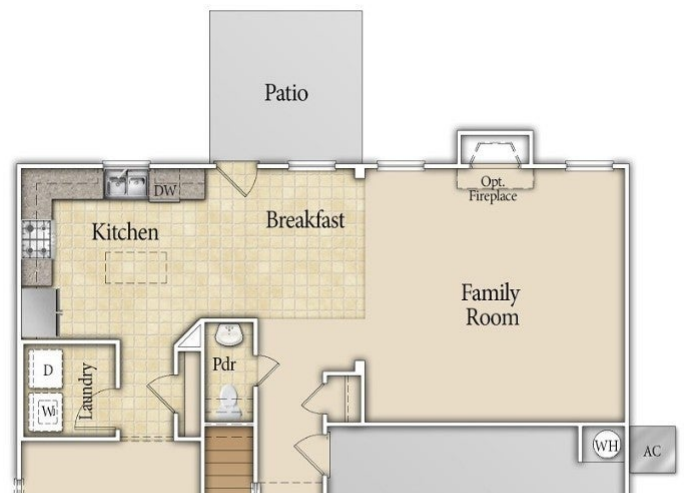
Tibet Road at Sassafra, Allenhurst, GA

The Sunbury is one of our favorites and once inside, you'll see why! This floor plan has everything you want at a price almost anyone can afford. Display your family collage along the foyer corridor which leads to the great room with the electric fireplace as the focal point. The kitchen and breakfast nook are adjacent to the great room so the cook never misses out on the party! An island in the kitchen is the perfect work space for finishing touches before taking the meal to the formal dining room, featuring a bay window and coffered ceiling. Upstairs is the family retreat. The primary suite is enormous and includes a sitting room & extra large walk-in closet. The additional bedrooms are spacious and share an upstairs hall bath. Artistic renderings are for informational purposes only. Actual floor plans, features and inclusions may vary.

Built in 2024

## Essential Information

MLS #	310584
Price	\$307,475
Bedrooms	4
Bathrooms	3.00
Full Baths	2
Half Baths	1
Square Footage	2,254
Square Footage	23958



Acres	0.55
Year Built	2024
Type	Residential
Sub-Type	Single Family Residence
Style	Traditional
Status	Active

### Community Information

Address	9829 Tibet Highway Se
Subdivision	Tibet Road at Sassafras
City	Allenhurst
County	Long
State	GA
Zip Code	31301

### Amenities

Utilities	Underground Utilities
Features	Sprinkler System
Parking	Attached
# of Garages	2
Garages	Attached

### Interior

Interior Features	Breakfast Area, Double Vanity, Entrance Foyer, Garden Tub/Roman Tub, High Ceilings, Kitchen Island, Primary Suite, Pantry, Pull Down Attic Stairs, Separate Shower, Programmable Thermostat
Appliances	Dishwasher, Electric Water Heater, Microwave, Oven, Range, Refrigerator
Heating	Central, Electric
Cooling	Central Air, Electric
Fireplace	Yes
# of Fireplaces	1
Fireplaces	Electric, Great Room
# of Stories	2

### Exterior

Exterior	Brick
Exterior Features	Covered Patio
Lot Description	Sprinkler System

Roof	Asphalt, Ridge Vents
Construction	Brick
Foundation	Slab

**School Information**

Elementary	Long County
Middle	Long County
High	Long County

**Additional Information**

Date Listed	April 19th, 2024
HOA Fees	34
HOA Fees Freq.	Monthly

**Listing Details**

Listing Agent	Miranda Sikes
Listing Office	RTS Realty LLC

The data relating to real estate for sale on this web site comes in part from the Internet Data Exchange program of the Savannah Multi-List Corporation. Real estate listings held by brokerage firms other than [INSERT BROKER NAME] are marked with the name of the listing brokers. Information deemed reliable but not guaranteed. © 2024 Savannah Multi-List Corporation. All rights reserved. This data up-to-date as of May 20th, 2024 at 06:36am, EDT. For the most current information, contact [your firm name, phone number, and e-mail address]