

\$1,390,000 - 205 S Sheftall Street, Pooler

MLS #310586

\$1,390,000

3 Bedroom, 2.00 Bathroom, 1,600 sqft
Commercial Sale on 2.67 Acres

N/A, Pooler, GA

Prime corner lot located at Highway 80 and Sheftall Street in the heart of Pooler's Historic District. Zoned C-1, this highly visible site is perfect for a restaurant, bank, pharmacy, medical office, or retail center. The City of Pooler offers capped tap-in fees and building permits within the Main Street Overlay District. Additional adjoining land is available if needed.

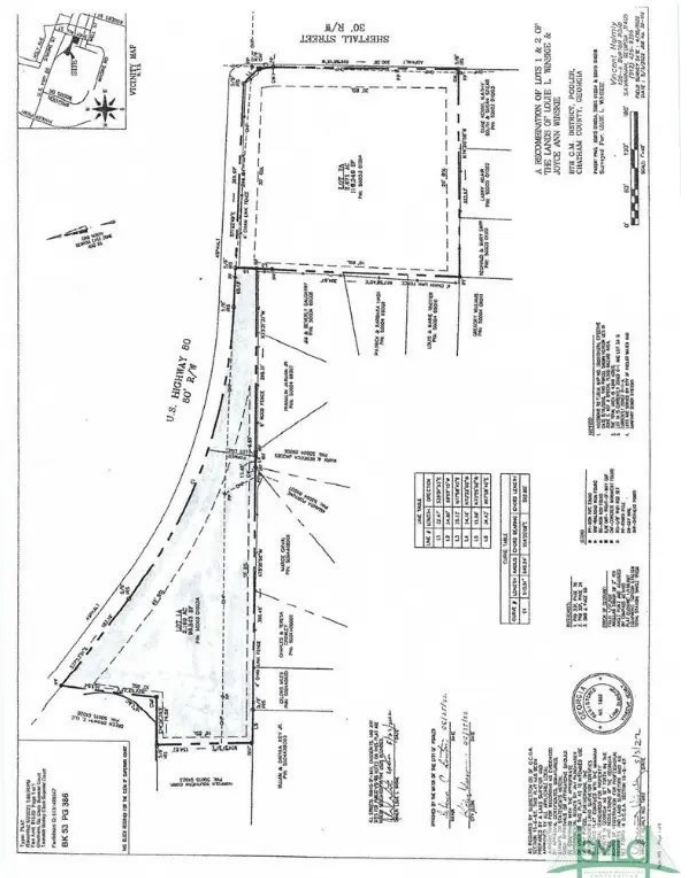
Built in 1950

Essential Information

MLS #	310586
Price	\$1,390,000
Bedrooms	3
Bathrooms	2.00
Full Baths	2
Square Footage	1,600
Square Footage	116349
Acres	2.67
Year Built	1950
Type	Commercial Sale
Sub-Type	Land
Style	Ranch
Status	Active

Community Information

Address	205 S Sheftall Street
Subdivision	N/A



City	Pooler
County	Chatham
State	GA
Zip Code	31322

Interior

Appliances	No Hot Water
Heating	None
Cooling	None
# of Stories	1

Exterior

Exterior Features	Fence
Roof	Asphalt
Foundation	Slab

Additional Information

Date Listed	April 17th, 2024
Zoning	C1

Listing Details

Listing Agent	Holly S. Young
Listing Office	Re/Max Savannah

The data relating to real estate for sale on this web site comes in part from the Internet Data Exchange program of the Savannah Multi-List Corporation. Real estate listings held by brokerage firms other than [INSERT BROKER NAME] are marked with the name of the listing brokers. Information deemed reliable but not guaranteed. © 2025 Savannah Multi-List Corporation. All rights reserved. This data up-to-date as of October 15th, 2025 at 06:43am, EDT. For the most current information, contact [your firm name, phone number, and e-mail address]