

\$294,725 - 9879 Tibet Highway Se, Allenhurst

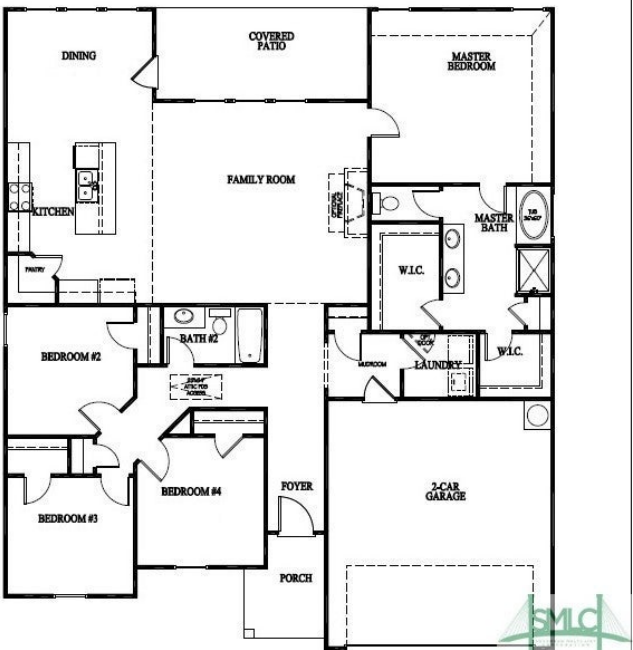
MLS #310593

\$294,725

4 Bedroom, 2.00 Bathroom, 1,926 sqft
Residential on 0.52 Acres

Tibet Road at Sassafras, Allenhurst, GA

This charming 4-bedroom, 2-bathroom ranch, boasting BRICK with low-maintenance vinyl accents, is located in the peaceful countryside of Tibet Road at Sassafras. Cross the threshold into a an open, stylish layout featuring an electric fireplace as the focal point in the great room. The expansive kitchen featuring attractive island layout, quartz countertops, upgraded cabinetry, and large corner pantry, is lovely and spacious. The primary bedroom includes two walk-in closets, a linen closet, and private bath with separate tub and shower. The other three bedrooms, situated on the opposite side of this split floor plan allow for maximum privacy and have ample closet space. A breezy, covered back porch is a great spot to relax and enjoy the back yard. Artistic rendering(s) is for informational purposes only. Actual floor plans and inclusions may vary.



Built in 2024

Essential Information

MLS #	310593
Price	\$294,725
Bedrooms	4
Bathrooms	2.00
Full Baths	2
Square Footage	1,926
Square Footage	22651
Acres	0.52

Year Built	2024
Type	Residential
Sub-Type	Single Family Residence
Style	Traditional
Status	Active

Community Information

Address	9879 Tibet Highway Se
Subdivision	Tibet Road at Sassafras
City	Allenhurst
County	Long
State	GA
Zip Code	31301

Amenities

Utilities	Underground Utilities
Features	Sprinkler System
Parking	Attached
# of Garages	2
Garages	Attached

Interior

Interior Features	Breakfast Bar, Double Vanity, Entrance Foyer, Garden Tub/Roman Tub, Primary Suite, Pantry, Pull Down Attic Stairs, Separate Shower, Programmable Thermostat
Appliances	Dishwasher, Electric Water Heater, Microwave, Oven, Range, Refrigerator
Heating	Central, Electric
Cooling	Central Air, Electric
Fireplace	Yes
# of Fireplaces	1
Fireplaces	Electric, Great Room
# of Stories	1

Exterior

Exterior	Brick
Exterior Features	Patio
Lot Description	Sprinkler System
Roof	Asphalt, Ridge Vents

Construction	Brick
Foundation	Slab

School Information

Elementary	Long County
Middle	Long County
High	Long County

Additional Information

Date Listed	April 19th, 2024
HOA Fees	34
HOA Fees Freq.	Monthly

Listing Details

Listing Agent	Miranda Sikes
Listing Office	RTS Realty LLC

The data relating to real estate for sale on this web site comes in part from the Internet Data Exchange program of the Savannah Multi-List Corporation. Real estate listings held by brokerage firms other than [INSERT BROKER NAME] are marked with the name of the listing brokers. Information deemed reliable but not guaranteed. © 2024 Savannah Multi-List Corporation. All rights reserved. This data up-to-date as of May 20th, 2024 at 06:16am, EDT. For the most current information, contact [your firm name, phone number, and e-mail address]