

\$425,000 - Veterans Drive, Tybee Island

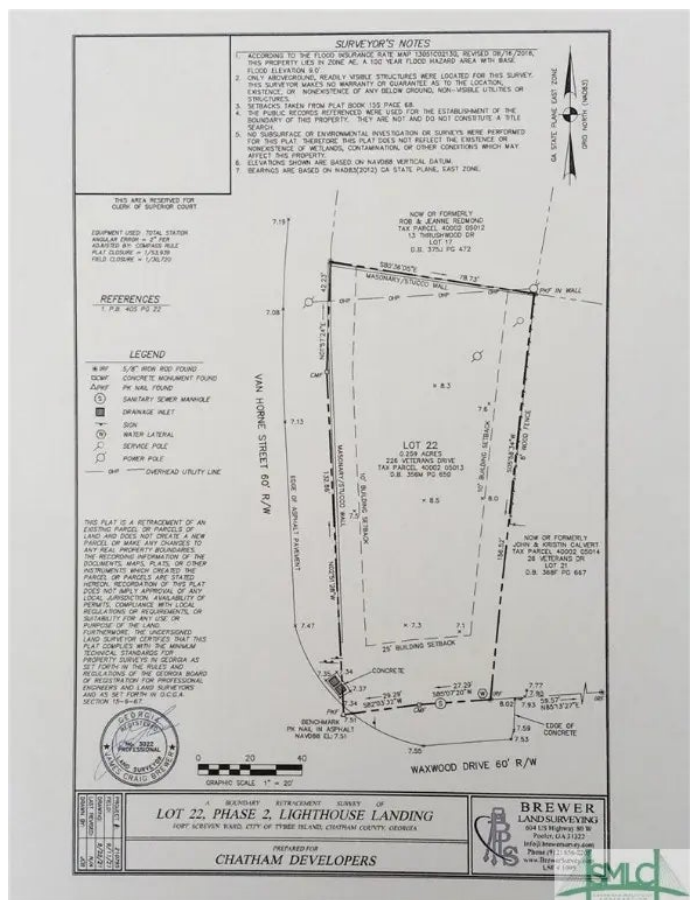
MLS #321709

\$425,000

Bedroom, Bathroom,
Land on 0.26 Acres

N/A, Tybee Island, GA

Large building lot in excellent island location in the historic Fort Screven area. Part of the Lighthouse Landing S/D & in the shadow of the famous Tybee Island Lighthouse. Just a short walk to the beach, North Beach Grill, Maritime Museum, JayCee Park, American Legion Post and near many North Island restaurants & businesses. A great place to build your island getaway or permanent home! Priced below comparable properties. See it today!



Essential Information

MLS #	321709
Price	\$425,000
Square Footage	11326
Acres	0.26
Type	Land
Sub-Type	Land
Status	Active

Community Information

Address	Veterans Drive
Subdivision	N/A
City	Tybee Island
County	Chatham
State	GA
Zip Code	31328

Amenities



Utilities	Cable Available
Features	Corner Lot
Waterfront	Beach Access

Exterior

Exterior Features	Fence
Lot Description	Corner Lot

Additional Information

Date Listed	November 1st, 2024
Zoning	R1

Listing Details

Listing Agent	Joseph D. Shields
Listing Office	Century 21 Solomon Properties

The data relating to real estate for sale on this web site comes in part from the Internet Data Exchange program of the Savannah Multi-List Corporation. Real estate listings held by brokerage firms other than [INSERT BROKER NAME] are marked with the name of the listing brokers. Information deemed reliable but not guaranteed. © 2025 Savannah Multi-List Corporation. All rights reserved. This data up-to-date as of October 15th, 2025 at 02:48pm, EDT. For the most current information, contact [your firm name, phone number, and e-mail address]