

\$7,950 - 602 E Us Hwy 80 Street, Tybee Island

MLS #322906

\$7,950

Bedroom, 3.00 Bathroom, 2,262 sqft
Commercial Lease on 0.30 Acres

N/A, Tybee Island, GA

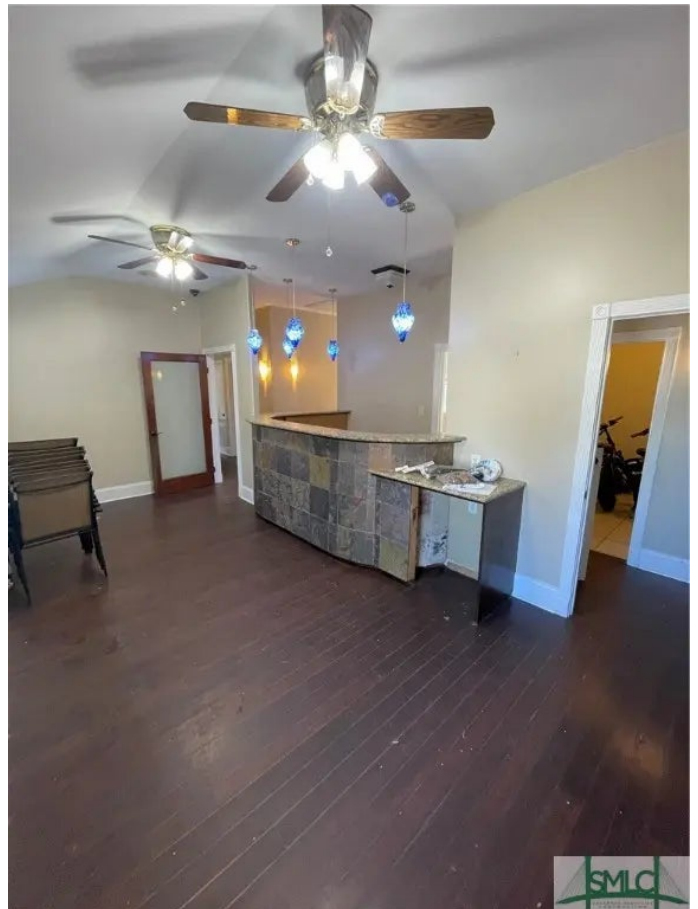
This standalone building offers a versatile space in a highly desirable location, just moments from shopping, dining, and residential neighborhoods. With its flexible layout, the property can accommodate a variety of uses, including retail, medical, office, or restaurant operations. The building is available for single-tenant occupancy or potential subdivide for two tenants. A private parking lot provides convenient on-site parking. Lease terms are negotiable.

This exceptional property is currently available at \$7,950/month NNN. Contact us today to schedule a viewing and explore all the possibilities this space has to offer!

Built in 2002

Essential Information

MLS #	322906
Price	\$7,950
Bathrooms	3.00
Half Baths	3
Square Footage	2,262
Square Footage	13199
Acres	0.30
Year Built	2002
Type	Commercial Lease
Sub-Type	Retail
Style	A-Frame



Status Active

Community Information

Address 602 E Us Hwy 80 Street
Subdivision N/A
City Tybee Island
County Chatham
State GA
Zip Code 31328

Amenities

Utilities Cable Available, Underground Utilities
Parking Spaces 20

Interior

Appliances Electric Water Heater, Refrigerator
Heating Central, Electric
Cooling Central Air, Electric
of Stories 1

Exterior

Exterior Block, Frame, Wood Siding
Roof Asphalt
Construction Block, Frame, Wood Siding
Foundation Block

Additional Information

Date Listed December 2nd, 2024
Zoning C2

Listing Details

Listing Agent Samuel O. Clark
Listing Office Parker Scott Properties

The data relating to real estate for sale on this web site comes in part from the Internet Data Exchange program of the Savannah Multi-List Corporation. Real estate listings held by brokerage firms other than [INSERT BROKER NAME] are marked with the name of the listing brokers. Information deemed reliable but not guaranteed. © 2025 Savannah Multi-List Corporation. All rights reserved. This data up-to-date as of October 15th, 2025 at 08:11am, EDT. For the most current information, contact [your firm name, phone number, and e-mail address]