

\$985,000 - 108 San Marco Drive, Tybee Island

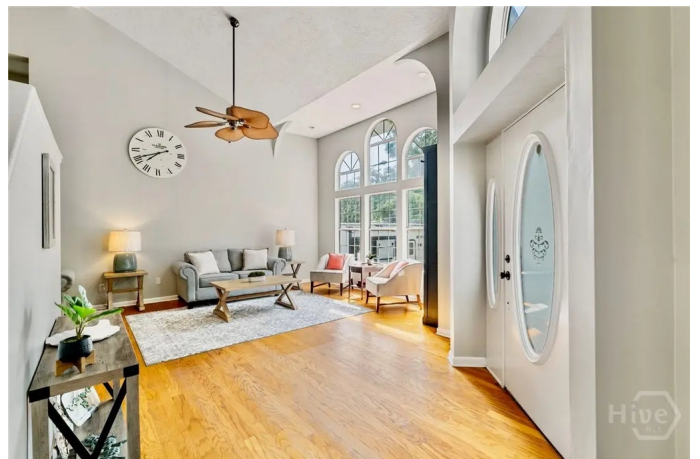
MLS #SA330978

\$985,000

6 Bedroom, 3.00 Bathroom, 3,486 sqft
Residential on 0.37 Acres

Spanish Hammock, Tybee Island, GA

Waterfront on Tidal Creek 6BR/3BA 3486sqft Home in Spanish Hammock w/Private Floating Dock! Located in Unincorporated Chatham County - Live Tybee Life w/o Rental Restrictions. STVR Eligible w/Rental Projections of Up to \$90K Annually! Room to add Pool to Increase Projected Annual Income to \$125K+! No HOA - Allowing You to Park Boats, RVs, etc! Spacious Kitchen w/Granite Countertops, Undermount Lighting, Stainless Steel Appliances, Barstool Seating & White Cabinets w/ Breakfast Area Overlooking Tidal Creek! Laundry Room Off Kitchen w/Access to Backyard. Backyard Features Massive Deck + Dock w/Fish Cleaning Station + Water Line. Open Concept Oversized Living Room Features Vaulted Ceilings and Natural Light! Formal Dining Room w/Wet Bar Leads to Family Room. Large Primary Suite w/ Tidal Creek Views + Ensuite Bath w/Jacuzzi Tub Overlooking Backyard, Double Vanities, Walk In Shower, Linen Closet & Walk In Closet! Finished Room Off Garage w/Private Entrance Has Potential to be In-Law Suite.



Built in 1991

Essential Information

MLS #	SA330978
Price	\$985,000
Bedrooms	6
Bathrooms	3.00

Full Baths	3
Square Footage	3,486
Square Footage	16117
Acres	0.37
Year Built	1991
Type	Residential
Sub-Type	Single Family Residence
Style	Contemporary
Status	Active

Community Information

Address	108 San Marco Drive
Subdivision	Spanish Hammock
City	Tybee Island
County	Chatham
State	GA
Zip Code	31328

Amenities

Utilities	Cable Available
Features	Back Yard, Interior Lot, Private
Parking	Attached, Garage, Garage Door Opener, Off Street, Rear/Side/Off Street
# of Garages	2
Garages	Attached, Garage, Garage Door Opener, Off Street, Rear/Side/Off Street
View	Marsh View, Creek/Stream
Is Waterfront	Yes
Waterfront	Marsh

Interior

Interior Features	Wet Bar, Breakfast Bar, Breakfast Area, Tray Ceiling(s), Double Vanity, Entrance Foyer, High Ceilings, Jetted Tub, Primary Suite, Pantry, Pull Down Attic Stairs, Recessed Lighting, Split Bedrooms, Separate Shower, Upper Level Primary, Vaulted Ceiling(s)
Appliances	Some Electric Appliances, Dryer, Dishwasher, Electric Water Heater, Disposal, Microwave, Oven, Plumbed For Ice Maker, Range, Refrigerator, Washer
Heating	Central, Electric
Cooling	Central Air, Electric
# of Stories	2

Has Basement	Yes
Basement	Exterior Entry, Interior Entry, Partially Finished

Exterior

Exterior	Cedar, Stucco
Exterior Features	Deck, Dock
Lot Description	Back Yard, Interior Lot, Private
Windows	Double Pane Windows
Roof	Metal
Construction	Cedar, Stucco
Foundation	Block, Concrete Perimeter, Pillar/Post/Pier, Raised

School Information

Elementary	Howard
Middle	Coastal
High	Islands

Additional Information

Date Listed	May 23rd, 2025
Zoning	R1

Listing Details

Listing Agent	Jennifer L. Rutherford
Listing Office	Jenny Rutherford Real Estate, LLC

The data relating to real estate for sale on this web site comes in part from the Internet Data Exchange program of the Savannah Multi-List Corporation. Real estate listings held by brokerage firms other than [INSERT BROKER NAME] are marked with the name of the listing brokers. Information deemed reliable but not guaranteed. © 2025 Savannah Multi-List Corporation. All rights reserved. This data up-to-date as of October 15th, 2025 at 12:48pm, EDT. For the most current information, contact [your firm name, phone number, and e-mail address]