

\$850,000 - 2 Franklin Creek Road S, Savannah

MLS #SA331414

\$850,000

3 Bedroom, 5.00 Bathroom, 2,865 sqft

Residential on 0.24 Acres

The Landings on Skidaway Is, Savannah, GA

NEW IMPROVED PRICE WITH LOTS OF NEW UPGRADES!

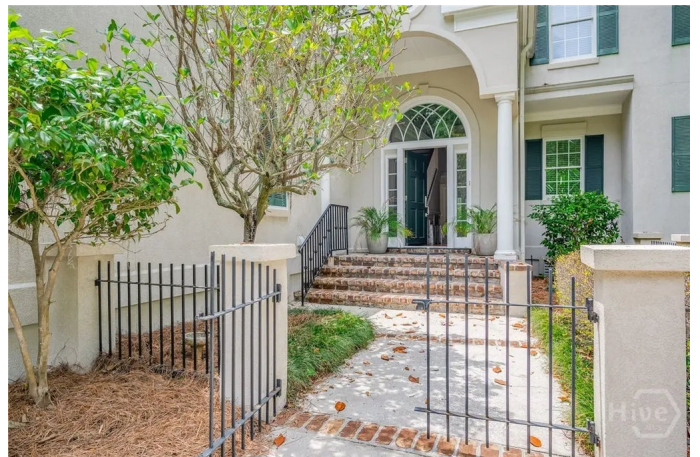
Freshly painted interior with neutral tones that are complemented by brand-new energy-efficient windows in the Kitchen, Dining Room area and upstairs Loft! New carpet to be installed in the Primary bedroom as well as the upstairs loft area. This fabulous home is located near the Maingate in the highly sought-after Franklin Creek area, this charming 3 bedroom, 3 full bath and 2 1/2 bath patio home with over 2865 sq ft. features stunning reclaimed heart pine wood floors and peaceful lagoon views! The main level offers a spacious primary bedroom suite, along with a convenient half bath for guests. Upstairs, you'll find two generously sized guest bedrooms, each with its own ensuite bath—perfect for privacy and comfort. A standout feature is the approximately 400 sq. ft. unfinished bonus room, accessible via an interior staircase and a separate staircase from the garage, offering endless potential for a home office, gym, or additional living space. This home offers a newer roof, HVAC, and Canvas awning covering the back patio. Enjoy Low country living at its best in this elegant and functional home!

Built in 2001

Essential Information

MLS #

SA331414



Price	\$850,000
Bedrooms	3
Bathrooms	5.00
Full Baths	3
Half Baths	2
Square Footage	2,865
Square Footage	10454
Acres	0.24
Year Built	2001
Type	Residential
Sub-Type	Single Family Residence
Style	Other
Status	Active

Community Information

Address	2 Franklin Creek Road S
Subdivision	The Landings on Skidaway Is
City	Savannah
County	Chatham
State	GA
Zip Code	31411

Amenities

Utilities	Cable Available, Underground Utilities
Features	Level, Sprinkler System
Parking	Attached, Golf Cart Garage, Garage Door Opener, Kitchen Level, RV Access/Parking
# of Garages	2
Garages	Attached, Golf Cart Garage, Garage Door Opener, Kitchen Level, RV Access/Parking
View	Lagoon
Is Waterfront	Yes
Waterfront	Boat Dock/Slip, Boat Ramp/Lift Access
Has Pool	Yes
Pool	Community

Interior

Interior Features	Attic, Breakfast Bar, Built-in Features, Ceiling Fan(s), Double Vanity, Entrance Foyer, Fireplace, Garden Tub/Roman Tub, High Ceilings, Main
-------------------	--

	Level Primary, Pull Down Attic Stairs, Recessed Lighting, Skylights, Separate Shower
Appliances	Some Electric Appliances, Cooktop, Dishwasher, Electric Water Heater, Disposal, Microwave, Range Hood, Refrigerator
Heating	Central, Gas
Cooling	Central Air, Electric
Fireplace	Yes
# of Fireplaces	1
Fireplaces	Family Room, Gas Starter, Ventless, Gas Log
# of Stories	2

Exterior

Exterior	Stucco
Exterior Features	Balcony, Covered Patio, Courtyard, Deck, Dock
Lot Description	Level, Sprinkler System
Windows	Skylight(s)
Roof	Asphalt
Construction	Stucco
Foundation	Raised, Slab

School Information

Elementary	Hesse
Middle	Hesse
High	Jenkins

Additional Information

Date Listed	May 21st, 2025
Zoning	PUDR
HOA Fees	2518
HOA Fees Freq.	Annually

Listing Details

Listing Agent	Wendy R. Reed
Listing Office	The Landings Company

The data relating to real estate for sale on this web site comes in part from the Internet Data Exchange program of the Savannah Multi-List Corporation. Real estate listings held by brokerage firms other than [INSERT BROKER NAME] are marked with the name of the listing brokers. Information deemed reliable but not guaranteed. © 2025 Savannah Multi-List Corporation. All rights reserved. This data up-to-date as of October 15th, 2025 at 05:05pm, EDT. For the most current information, contact [your firm name, phone number, and e-mail address]