

\$329,968 - 106 Marsh Salt Lane, Port Wentworth

MLS #SA336351

\$329,968

3 Bedroom, 3.00 Bathroom, 1,617 sqft
Residential on 0.15 Acres

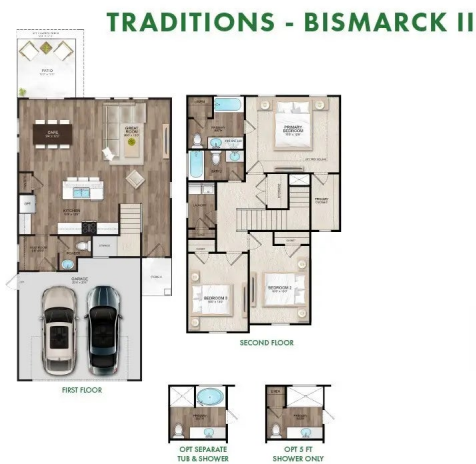
Rice Creek, Port Wentworth, GA

OUTSTANDING PRICE AND EXCEPTIONAL QUALITY! Savannah's most trusted local builder is proud to offer our Bismarck II TR plan. This home has some excellent features and upgrades including a fully sodded and irrigated yard with automatic timer, granite tops with tile splash in kitchen, all stainless appliances in kitchen including Refrigerator, Shower in primary bathroom, garage door opener with 2 remotes, pendant lights above kitchen island, click plank wood look flooring in main living area and wet areas, 36" upgraded Level 3 cabinet uppers in kitchen, granite tops in Kitchen, ADT security system, and quartz tops in full bathrooms. Estimated completion is November 2025. Pictures, features, and selections shown are for illustration purposes and may vary from the home built. All builder incentives applied.

Built in 2025

Essential Information

| | |
|----------------|-----------|
| MLS # | SA336351 |
| Price | \$329,968 |
| Bedrooms | 3 |
| Bathrooms | 3.00 |
| Full Baths | 2 |
| Half Baths | 1 |
| Square Footage | 1,617 |
| Square Footage | 6578 |



| | |
|------------|-------------------------|
| Acres | 0.15 |
| Year Built | 2025 |
| Type | Residential |
| Sub-Type | Single Family Residence |
| Style | Traditional |
| Status | Active |

Community Information

| | |
|-------------|---------------------|
| Address | 106 Marsh Salt Lane |
| Subdivision | Rice Creek |
| City | Port Wentworth |
| County | Chatham |
| State | GA |
| Zip Code | 31407 |

Amenities

| | |
|--------------|--|
| Utilities | Cable Available, Underground Utilities |
| Features | Corner Lot, Level, Sprinkler System |
| Parking | Attached, Garage Door Opener |
| # of Garages | 2 |
| Garages | Attached, Garage Door Opener |
| Has Pool | Yes |
| Pool | Community |

Interior

| | |
|-------------------|---|
| Interior Features | Breakfast Area, Ceiling Fan(s), Double Vanity, Primary Suite, Pull Down Attic Stairs, Separate Shower, Upper Level Primary, Programmable Thermostat |
| Appliances | Some Electric Appliances, Dishwasher, Electric Water Heater, Disposal, Microwave, Oven, Plumbed For Ice Maker, Range, Refrigerator |
| Heating | Central, Electric, Heat Pump, Zoned |
| Cooling | Central Air, Electric, Heat Pump, Zoned |
| # of Stories | 2 |

Exterior

| | |
|-------------------|-------------------------------------|
| Exterior | Vinyl Siding |
| Exterior Features | Patio |
| Lot Description | Corner Lot, Level, Sprinkler System |
| Windows | Double Pane Windows |

| | |
|--------------|-----------------------------|
| Roof | Asphalt, Composition, Other |
| Construction | Vinyl Siding |
| Foundation | Slab |

School Information

| | |
|------------|------------|
| Elementary | Rice Creek |
| Middle | Rice Creek |
| High | Groves |

Additional Information

| | |
|----------------|-------------------|
| Date Listed | August 11th, 2025 |
| HOA Fees | 440 |
| HOA Fees Freq. | Annually |

Listing Details

| | |
|----------------|-------------------------|
| Listing Agent | Mark D. Jones |
| Listing Office | Landmark 24 Realty, Inc |

The data relating to real estate for sale on this web site comes in part from the Internet Data Exchange program of the Savannah Multi-List Corporation. Real estate listings held by brokerage firms other than [INSERT BROKER NAME] are marked with the name of the listing brokers. Information deemed reliable but not guaranteed. © 2025 Savannah Multi-List Corporation. All rights reserved. This data up-to-date as of October 14th, 2025 at 05:46am, EDT. For the most current information, contact [your firm name, phone number, and e-mail address]