

\$650,000 - 28 Dame Kathryn Drive, Savannah

MLS #SA336848

\$650,000

4 Bedroom, 3.00 Bathroom, 2,170 sqft

Residential on 0.25 Acres

The Landings on Skidaway Is, Savannah, GA

Don't miss this beautifully updated 4-bedroom, 3 full bathroom end-unit condo located in The Settlement in Marshwood at The Landings. This light-filled condominium offers multiple outdoor living spaces, including two balconies, a deck, and a patio—perfect for enjoying the serene surroundings.

Inside, you'll find hardwood floors throughout, an updated kitchen, and fully renovated bathrooms. Fresh paint throughout gives the unit a clean, modern feel. The first floor features a flexible bedroom that can also serve as an office or den, with three additional bedrooms upstairs.

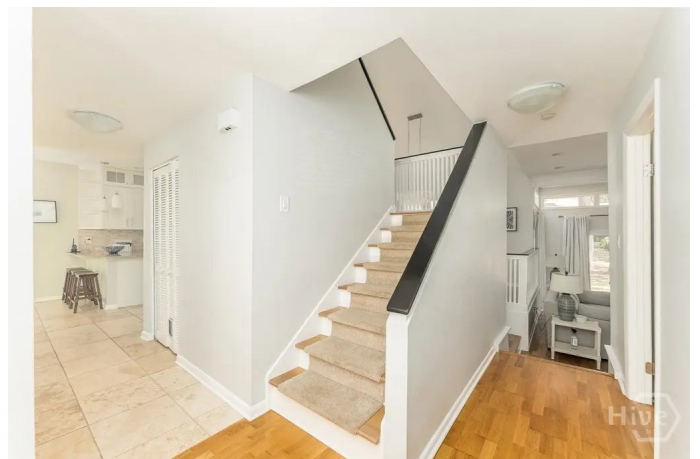
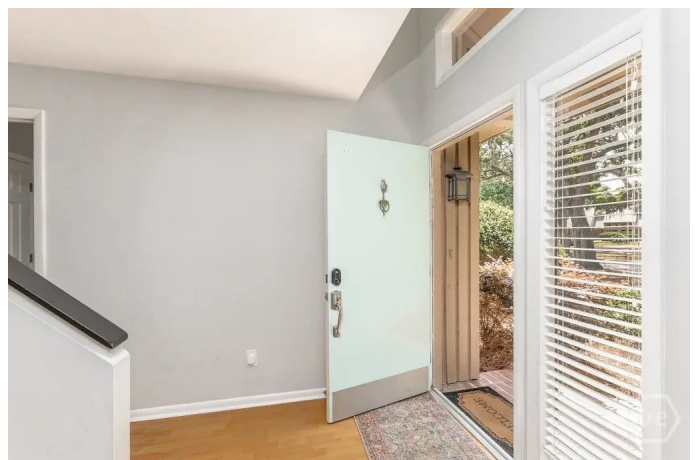
Additional features include a newer roof and a tankless water heater. This move-in ready unit is a great opportunity to enjoy low-maintenance living in one of Savannah's premier gated communities.

Note: Photos shown are from the previous owner. New photos will be uploaded within the next two weeks. Seller holds an active GA Real Estate License # 365656.

Built in 1977

Essential Information

MLS #	SA336848
Price	\$650,000
Bedrooms	4
Bathrooms	3.00
Full Baths	3



Square Footage	2,170
Square Footage	10890
Acres	0.25
Year Built	1977
Type	Residential
Sub-Type	Townhouse
Style	Traditional
Status	Active

Community Information

Address	28 Dame Kathryn Drive
Subdivision	The Landings on Skidaway Is
City	Savannah
County	Chatham
State	GA
Zip Code	31411

Amenities

Utilities	Cable Available, Underground Utilities
Features	Corner Lot, Level, Wooded
Parking	RV Access/Parking
Garages	RV Access/Parking
View	Trees/Woods
Waterfront	Boat Dock/Slip
Has Pool	Yes
Pool	Community

Interior

Interior Features	Ceiling Fan(s), Entrance Foyer, High Ceilings, Pull Down Attic Stairs, Recessed Lighting, Separate Shower, Upper Level Primary, Programmable Thermostat
Appliances	Some Electric Appliances, Dishwasher, Electric Water Heater, Disposal, Microwave, Oven, Range, Refrigerator
Heating	Central, Electric
Cooling	Central Air, Electric
# of Stories	2
Basement	None

Exterior

Exterior	Cedar
Exterior Features	Balcony, Dock, Patio
Lot Description	Corner Lot, Level, Wooded
Roof	Asphalt
Construction	Cedar
Foundation	Slab

School Information

Elementary	Hesse
Middle	Hesse
High	Jenkins

Additional Information

Date Listed	August 18th, 2025
HOA Fees	2518
HOA Fees Freq.	Annually

Listing Details

Listing Agent	Jill W. Brooks
Listing Office	The Landings Company

The data relating to real estate for sale on this web site comes in part from the Internet Data Exchange program of the Savannah Multi-List Corporation. Real estate listings held by brokerage firms other than [INSERT BROKER NAME] are marked with the name of the listing brokers. Information deemed reliable but not guaranteed. © 2025 Savannah Multi-List Corporation. All rights reserved. This data up-to-date as of October 15th, 2025 at 05:00pm, EDT. For the most current information, contact [your firm name, phone number, and e-mail address]