

\$260,000 - 133 Birch Circle, Port Wentworth

MLS #SA337001

\$260,000

3 Bedroom, 3.00 Bathroom, 1,451 sqft

Residential on 0.03 Acres

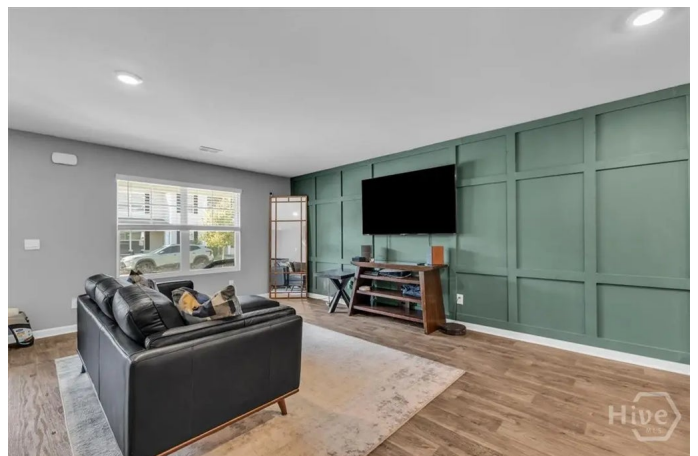
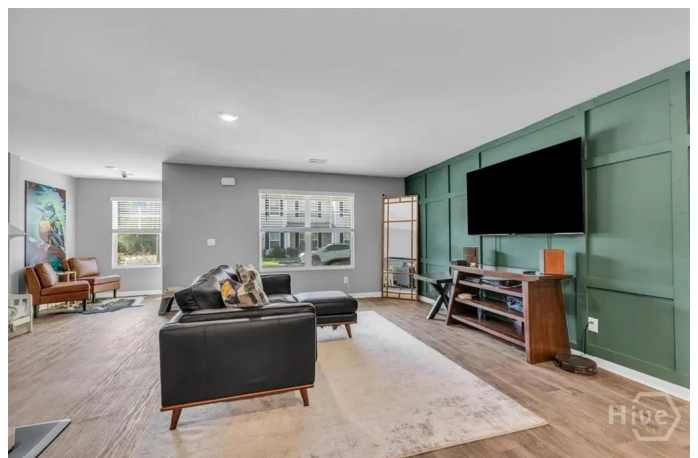
Rice Hope, Port Wentworth, GA

Welcome to 133 Birch Circle—where comfort meets convenience in Rice Hope, Port Wentworth’s premier community. This south-facing townhome features 3 bedrooms, 2.5 bathrooms, and 1,451 square feet of thoughtfully designed living space with an open, airy feel—plus an EV charger and 3 dedicated parking spaces for you and your guests. The neighborhood brings resort-style living right to your doorstep: enjoy a resort-style pool for hot Savannah days, a clubhouse and fitness center to stay active, a dog park for your four-legged companion, and scenic walking trails perfect for a reset. Beyond that, Rice Hope offers a soccer field, an amphitheater, and multiple lakes for fishing, while the HOA keeps the community connected with monthly events for residents. The location seals the deal—just 13 minutes to the airport, 24 minutes to downtown Savannah, and surrounded by shopping, dining, and quick highway access. Peaceful, convenient, and packed with amenities, this home checks every box.

Built in 2022

Essential Information

MLS #	SA337001
Price	\$260,000
Bedrooms	3
Bathrooms	3.00



Full Baths	2
Half Baths	1
Square Footage	1,451
Square Footage	1481
Acres	0.03
Year Built	2022
Type	Residential
Sub-Type	Townhouse
Style	Other
Status	Active

Community Information

Address	133 Birch Circle
Subdivision	Rice Hope
City	Port Wentworth
County	Chatham
State	GA
Zip Code	31407

Amenities

Utilities	Underground Utilities
Features	Garden
Parking	Detached, Garage, Off Street, Rear/Side/Off Street, Storage
Garages	Detached, Garage, Off Street, Rear/Side/Off Street, Storage
Has Pool	Yes
Pool	Community

Interior

Interior Features	Primary Suite, Pull Down Attic Stairs
Appliances	Electric Water Heater, Microwave, Oven, Range, Refrigerator
Heating	Central, Electric
Cooling	Central Air, Electric
# of Stories	2

Exterior

Exterior	Vinyl Siding
Exterior Features	Covered Patio, Porch
Lot Description	Garden
Roof	Asphalt

Construction Vinyl Siding

School Information

Elementary Rice Creek
Middle Rice Creek
High Groves

Additional Information

Date Listed August 19th, 2025
Days on Market 17
HOA Fees 126
HOA Fees Freq. Monthly

Listing Details

Listing Agent Matthew D. Myles
Listing Office eXp Realty LLC

The data relating to real estate for sale on this web site comes in part from the Internet Data Exchange program of the Savannah Multi-List Corporation. Real estate listings held by brokerage firms other than [INSERT BROKER NAME] are marked with the name of the listing brokers. Information deemed reliable but not guaranteed. © 2025 Savannah Multi-List Corporation. All rights reserved. This data up-to-date as of October 14th, 2025 at 05:50am, EDT. For the most current information, contact [your firm name, phone number, and e-mail address]