

\$365,000 - 158 Troupe Drive, Port Wentworth

MLS #SA339743

\$365,000

4 Bedroom, 2.00 Bathroom, 1,773 sqft
Residential on 0.21 Acres

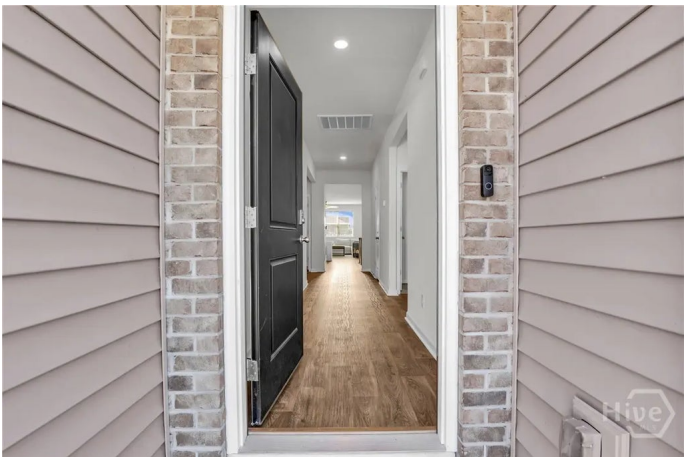
Godley Park Sub Ph 6, Port Wentworth, GA

Welcome to this beautifully maintained home in the desirable gated Godley Park—Highlands Square community of Savannah. Freshly painted and move-in ready, this property blends timeless design with everyday convenience. The open-concept layout offers abundant natural light, a spacious granite island, stainless steel appliances, and soaring ceilings. A thoughtful split-bedroom design provides both privacy and functionality. Step outside to enjoy a fenced backyard, perfect for entertaining or relaxing. The two-car garage, covered patio, and paid-off water softener system add extra value and convenience. Residents of Godley Park enjoy resort-style amenities including a fitness center, clubhouse, pool, volleyball court, playground, and park -all included in the HOA. Ideally located near shopping, dining, medical facilities, and entertainment, this home is ready for its next owner.

Built in 2021

Essential Information

MLS #	SA339743
Price	\$365,000
Bedrooms	4
Bathrooms	2.00
Full Baths	2
Square Footage	1,773
Square Footage	9191



Acres	0.21
Year Built	2021
Type	Residential
Sub-Type	Single Family Residence
Style	Ranch
Status	Active

Community Information

Address	158 Troupe Drive
Subdivision	Godley Park Sub Ph 6
City	Port Wentworth
County	Chatham
State	GA
Zip Code	31407

Amenities

Utilities	Underground Utilities
Features	Back Yard, Level, Private
Parking	Attached, Kitchen Level
# of Garages	2
Garages	Attached, Kitchen Level
View	Pond
Is Waterfront	Yes
Waterfront	Pond
Has Pool	Yes
Pool	Community

Interior

Interior Features	Breakfast Bar, Double Vanity, Kitchen Island, Main Level Primary, Pantry, Pull Down Attic Stairs, Separate Shower
Appliances	Some Electric Appliances, Dishwasher, Electric Water Heater, Disposal, Microwave, Oven, Range, Refrigerator
Heating	Central, Electric
Cooling	Central Air, Electric
# of Stories	1
Stories	1

Exterior

Exterior	Brick
----------	-------

Exterior Features	Covered Patio
Lot Description	Back Yard, Level, Private
Roof	Composition
Construction	Brick
Foundation	Slab

School Information

Elementary	Godley
Middle	Godley
High	Groves

Additional Information

Date Listed	September 16th, 2025
HOA Fees	95
HOA Fees Freq.	Monthly

Listing Details

Listing Agent	Kimberly Kilbourne
Listing Office	Redfin Corporation

The data relating to real estate for sale on this web site comes in part from the Internet Data Exchange program of the Savannah Multi-List Corporation. Real estate listings held by brokerage firms other than [INSERT BROKER NAME] are marked with the name of the listing brokers. Information deemed reliable but not guaranteed. © 2025 Savannah Multi-List Corporation. All rights reserved. This data up-to-date as of October 14th, 2025 at 02:46am, EDT. For the most current information, contact [your firm name, phone number, and e-mail address]