

# \$479,900 - 220 N Skinner Avenue, Pooler

MLS #SA340246

**\$479,900**

4 Bedroom, 3.00 Bathroom, 2,742 sqft

Residential on 0.65 Acres

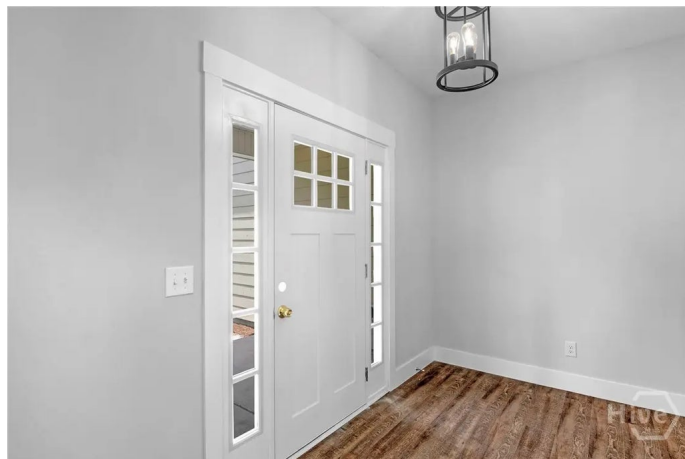
Rothwell Sub, Pooler, GA

No HOA, NO Flood insurance Gorgeous 2700+ sqft new construction on a massive 350' deep, .65 Acre lot, perfect for Boat/RV Parking. Spacious 4 bed, 2.5 bath home in quiet area. The main floor offers a massive, window flanked, family room open to dining and a well designed island kitchen with quartz counters, quality cabinetry, stainless appliances, and tons of counter & storage space. Nice sized Foyer, Formal dining or living with coffered ceiling, mudroom with storage, and guest bath. Primary suite has sitting area, intricate ceiling, huge walk-in closet, and a luxurious en-suite bath with soaring ceilings, double vanity, oversized soaking tub, and large walk-in shower. Spacious guest rooms share a large bath with double vanity and tiled shower/tub. Quality craftsmanship! 9' ceilings, recessed lights, wood shelving throughout, rear staircase, FULLY landscaped yard, concrete siding, Large covered patio overlooks yard with wooded privacy buffer. Yard extends well past wooded area

Built in 2025

## Essential Information

MLS #	SA340246
Price	\$479,900
Bedrooms	4
Bathrooms	3.00



Full Baths	2
Half Baths	1
Square Footage	2,742
Square Footage	28314
Acres	0.65
Year Built	2025
Type	Residential
Sub-Type	Single Family Residence
Style	Cape Cod, Traditional
Status	Active

### Community Information

Address	220 N Skinner Avenue
Subdivision	Rothwell Sub
City	Pooler
County	Chatham
State	GA
Zip Code	31322

### Amenities

Features	Greenbelt, Interior Lot, Other, Wooded
Parking	Attached, Garage Door Opener
# of Garages	2
Garages	Attached, Garage Door Opener
View	Trees/Woods

### Interior

Interior Features	Breakfast Bar, Breakfast Area, Bathtub, Ceiling Fan(s), Double Vanity, Entrance Foyer, Garden Tub/Roman Tub, High Ceilings, Primary Suite, Other, Pantry, Pull Down Attic Stairs, Recessed Lighting, Sitting Area in Primary, Separate Shower, Programmable Thermostat
Appliances	Dishwasher, Electric Water Heater, Refrigerator
Heating	Central, Electric
Cooling	Central Air, Electric
# of Stories	1
Stories	2

### Exterior

Exterior	Concrete
----------	----------

Exterior Features	Covered Patio
Lot Description	Greenbelt, Interior Lot, Other, Wooded
Windows	Double Pane Windows
Roof	Ridge Vents
Construction	Concrete
Foundation	Concrete Perimeter

### **Additional Information**

Date Listed	September 22nd, 2025
Zoning	R1A

### **Listing Details**

Listing Agent	Amber Williams
Listing Office	Re/Max Savannah

The data relating to real estate for sale on this web site comes in part from the Internet Data Exchange program of the Savannah Multi-List Corporation. Real estate listings held by brokerage firms other than [INSERT BROKER NAME] are marked with the name of the listing brokers. Information deemed reliable but not guaranteed. © 2025 Savannah Multi-List Corporation. All rights reserved. This data up-to-date as of October 15th, 2025 at 06:26am, EDT. For the most current information, contact [your firm name, phone number, and e-mail address]