

# \$875,000 - Tillman Eason Road, Claxton

MLS #SA341304

**\$875,000**

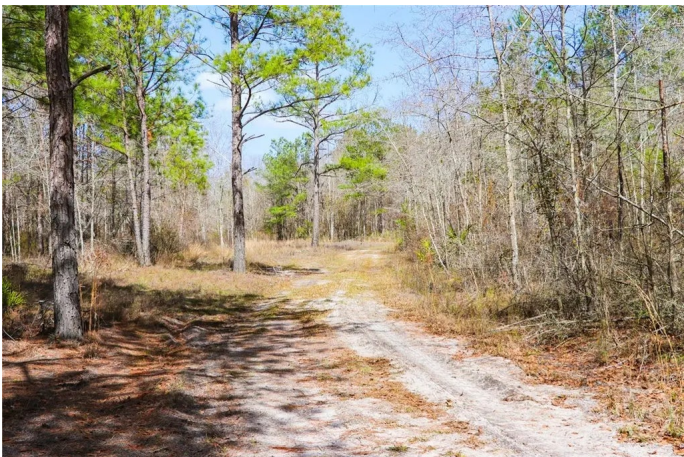
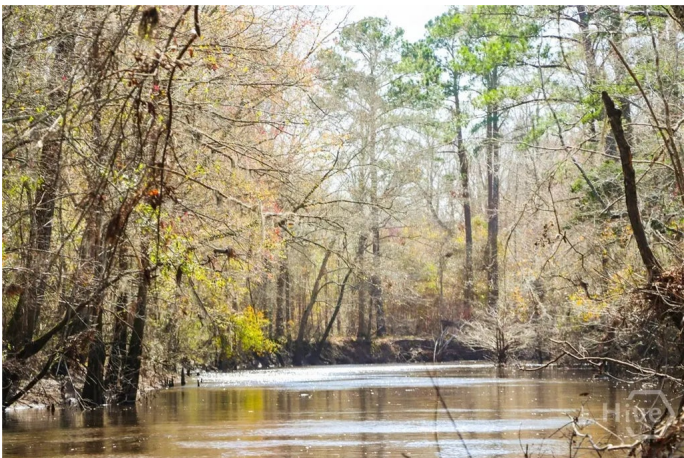
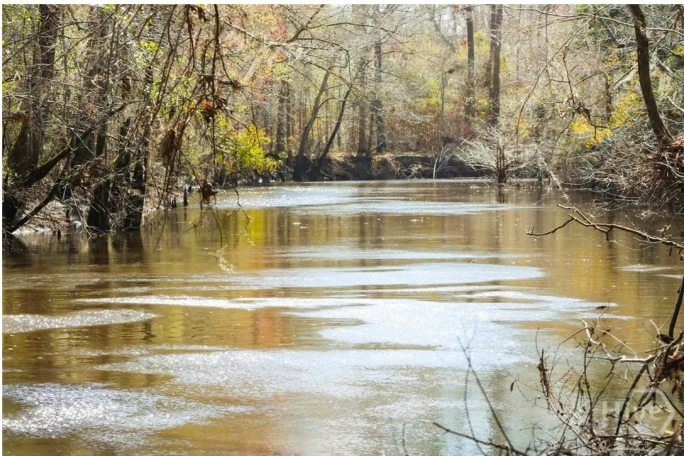
Bedroom, Bathroom,  
Land on 145.92 Acres

N/A, Claxton, GA

This 146-acre South Georgia property is a rare find for buyers seeking land with endless potential. With nearly 2,000 ft of river frontage, itâ€™s ideal for fishing, kayaking, and relaxing by the water. The land features open fields, mature timber, and thick coverâ€“perfect for deer, turkey, and small game hunting.

Fertile soil makes it great for gardening, food plots, or hobby farming. Whether you're planning to build a home, cabin, or hunting retreat, there are multiple private homesites with beautiful views.

Quiet and secluded, yet still close to town, this property offers a unique mix of recreation, privacy, and long-term worth. Donâ€™t miss the chance to make it yours!



## Essential Information

MLS #	SA341304
Price	\$875,000
Square Footage	6356145
Acres	145.92
Type	Land
Sub-Type	Land
Status	Active

## Community Information

Address	Tillman Eason Road
---------	--------------------

Subdivision	N/A
City	Claxton
County	Evans
State	GA
Zip Code	30417

### **Amenities**

Utilities	Sewer Not Available
Features	Hardwood Trees
Is Waterfront	Yes
Waterfront	River Access

### **Exterior**

Exterior	Other
Lot Description	Hardwood Trees
Construction	Other

### **Additional Information**

Date Listed	October 8th, 2025
Zoning	V5

### **Listing Details**

Listing Agent	Brooklyn Hewitt
Listing Office	Rawls Realty

The data relating to real estate for sale on this web site comes in part from the Internet Data Exchange program of the Savannah Multi-List Corporation. Real estate listings held by brokerage firms other than [INSERT BROKER NAME] are marked with the name of the listing brokers. Information deemed reliable but not guaranteed. © 2025 Savannah Multi-List Corporation. All rights reserved. This data up-to-date as of October 15th, 2025 at 02:53pm, EDT. For the most current information, contact [your firm name, phone number, and e-mail address]